



33 Midland Highway Campbells Creek VIC

3 2 2

Private from the road is this charming weatherboard Californian bungalow-style three-bedroom home set within magnificent park-like grounds, with an array of established ornamental trees and a borrowed landscape of ancient gums and poplars on a substantial allotment of 2472 sqm, providing space to roam, explore or just relax and enjoy your beautiful surroundings.

Price : \$795,000
Building Size : 157 sqm
Land Size : 2472 sqm
View : <https://www.cantwellproperty.com.au/sale/vic/greater-bendigo-region/campbells-creek/residential/house/7503548>

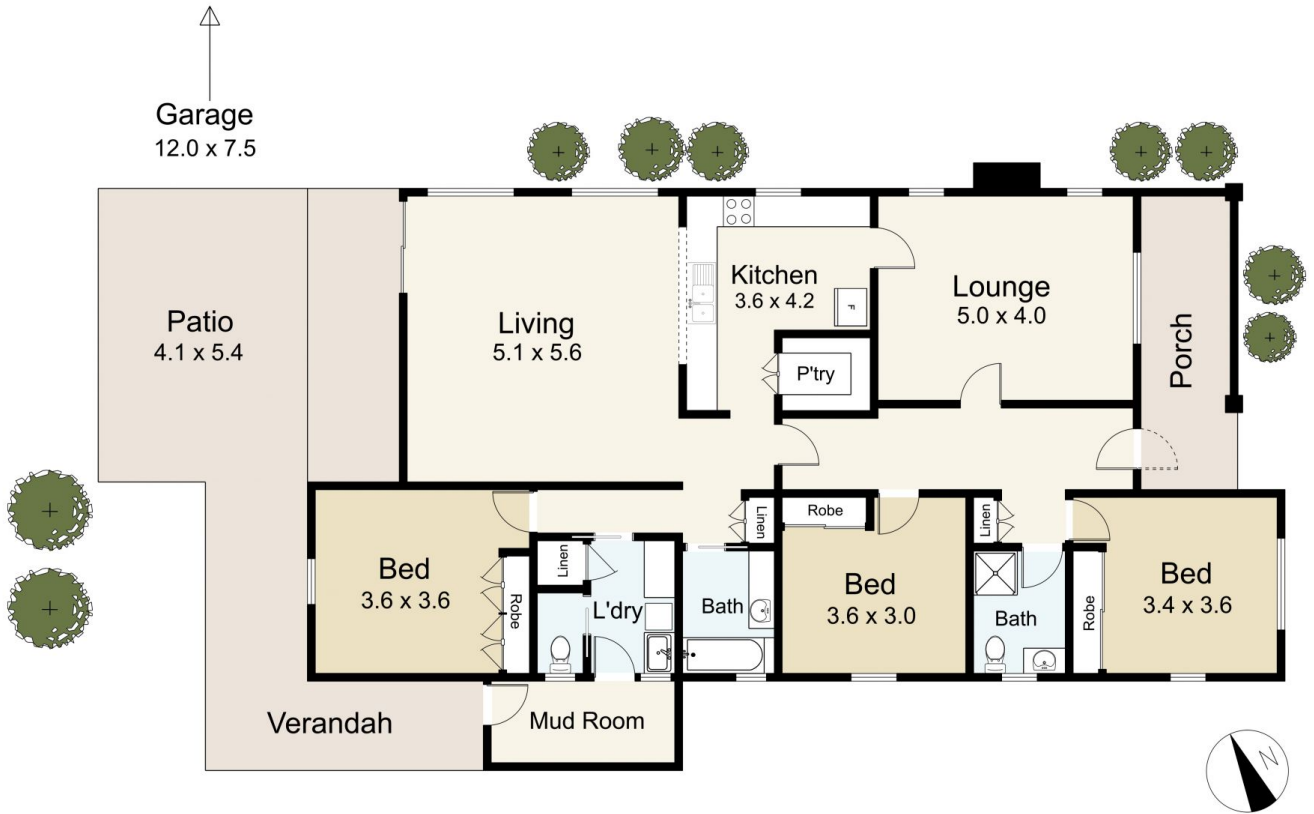
Enter from a front porch into a central hall with a high ceiling and stunning ornate plasterwork. Formal living with decorative period windows leads to the country-style kitchen with a freestanding gas cooktop with oven, a Miele dishwasher, a large walk-in pantry and plenty of storage and bench space. The kitchen is open to the spacious north-facing main living and dining area with its high cove ceiling and access to the patio providing alfresco dining overlooking the back garden and borrowed landscape of



Megan Walmsley
03 5472 1133



Tom Robertson
03 5472 1133

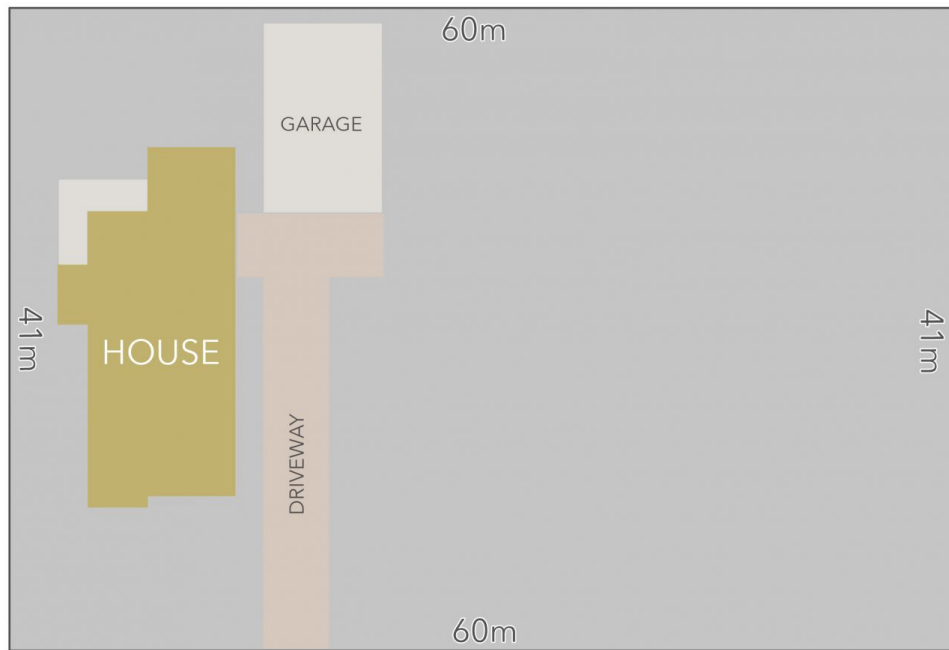


33 Midland Highway, Campbells Creek

SCALE UNIT IS IN METRES
 All measurements are approximate and for illustration purposes only. It should not be considered 100% accurate. Interested parties should rely on their own enquiries.

Residence - 157m²

Garage - 90m²



Midland Highway

LAND AREA : 2472m² (APPROX)



33 Midland Highway, Campbells Creek

All Measurements & Details Shown Are Approximate Only.