



21 Johnstone Street Castlemaine VIC

3 1 2

"Emoh Ruo" or "Our Home" is a fabulous and well-loved example of an Art Deco home ready for its next chapter for one to live the Australian dream. On a generous 1197 sqm and only 750m to the centre of Castlemaine, this three-bedroom home offers a step back in time with room to improve and explore.

Elevated and private with off-street parking, sweeping stairs lead to the front verandah with ornate column design, arches, and stained glass, which makes for a grand entrance. Once inside, a stunning decorative timber arch leads to a formal lounge with a recessed window sill and angled dual symmetric original brick fireplaces with gas heaters divide the lounge to the formal dining room. The dining room features a highly decorative ceiling and the original pass-through window from the kitchen. Central to the home is the kitchen, with an additional dining space

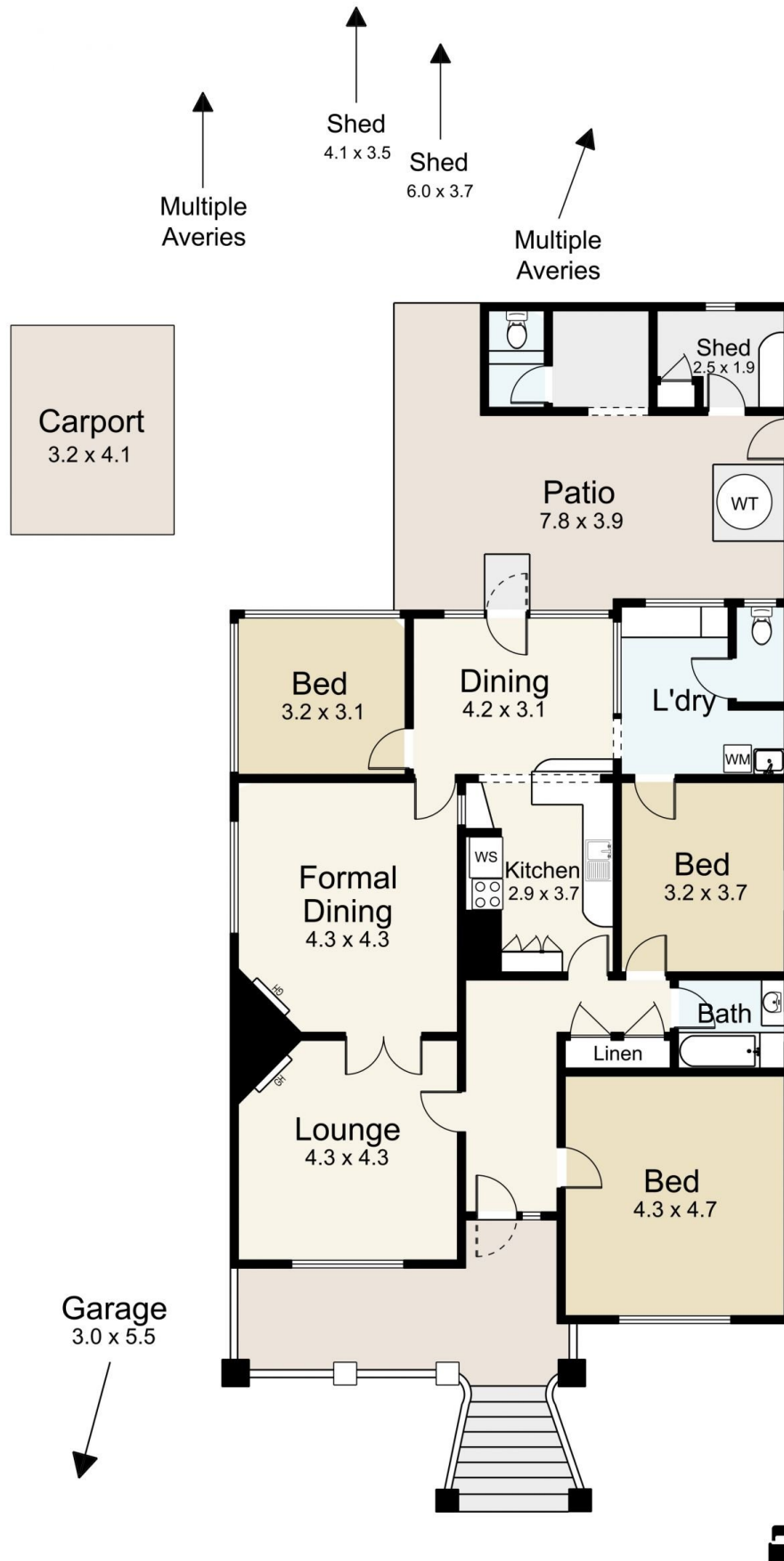
Price : \$795,000
Building Size : 132 sqm
Land Size : 1196 sqm
View : <https://www.cantwellproperty.com.au/sale/vic/greater-bendigo-region/castlemaine/residential/house/7635932>



Tom Robertson
03 5472 1133



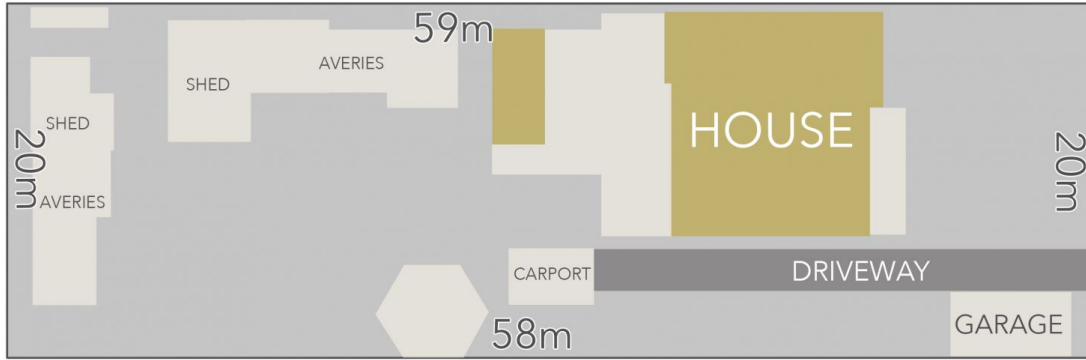
Megan Walmsley
03 5472 1133



21 Johnstone Street, Castlemaine

SCALE UNIT IS IN METRES
 All measurements are approximate and for illustration purposes only. It should not be considered 100% accurate. Interested parties should rely on their own enquiries.

Residence - 132m²
 Garage/Shed - 53m²



Johnstone Street



LAND AREA : 1197m² (APPROX)



21 Johnstone Street, Castlemaine

All Measurements & Details Shown Are Approximate Only.