



14 Church Street Maldon VIC

3 2 2

In the heritage town of Maldon is this c1860s double-fronted Victorian cottage with an L-shape verandah and the quintessential picket fence. Beautifully renovated with a sympathetic period-style addition and an interior in the French country style, this is a slice of provincial living in the historic Victorian Goldfields. The pretty town of Maldon is a hub of activity with community events and a fantastic selection of cafes, restaurants, retail shops, pubs and a bakery, a short drive from Castlemaine and a two-hour commute from Melbourne.

The period cottage sits within 1034 sqm of a beautiful garden highlighted by swathes of lavender, roses and established trees that create shaded private sitting areas. The floorplan features direct entry from the front verandah into a study/ bedroom with built-in robes and an adjoining second bedroom with built-in robes parted by a pretty

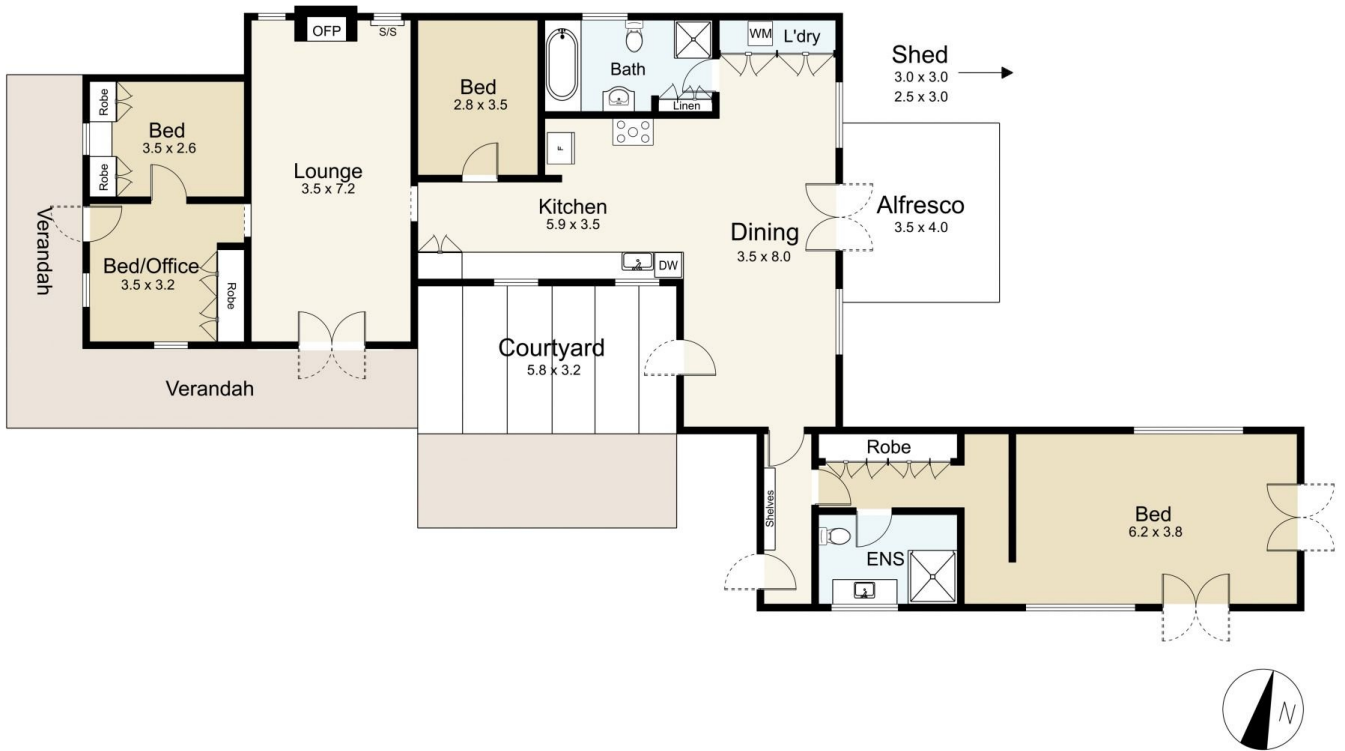
Price : \$ 1,080,000
Building Size : 157 sqm
Land Size : 1034 sqm
View : <https://www.cantwellproperty.com.au/sale/vic/greater-bendigo-region/maldon/residential/house/7808578>



Tom Robertson
03 5472 1133



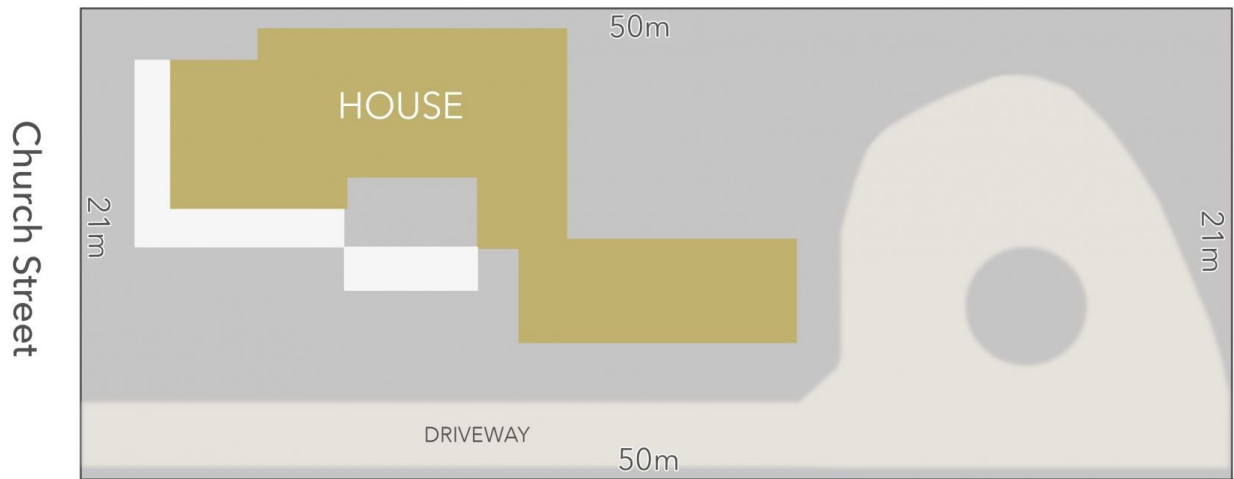
Megan Walmsley
03 5472 1133



14 Church Street, Maldon

SCALE UNIT IS IN METRES
 All measurements are approximate and for illustration purposes only. It should not be considered 100% accurate. Interested parties should rely on their own enquiries.

Residence - 157m²



LAND AREA : 1034m² (APPROX)



14 Church Street, Maldon

All Measurements & Details Shown Are Approximate Only.