



28 Blakeley Road Castlemaine VIC

5 🛏 3 🚿 3 🚗

Privately set back from the street, behind a bespoke timber fence, surrounded by a landscaped garden, is the home and studio of renowned artist David Frazer. Perched at the top of the driveway, the brick and timber-clad home, with its red door, is a welcome beacon, a place to be inspired and to inspire.

The home's bold architectural steps lead into a central hall with a double-height raked ceiling and a light well before leading to the north-facing living with a feature gas heater and large windows that frame the garden, and a step down leads to the kitchen with dining. The kitchen provides a freestanding Smeg 900mm gas cooktop with an oven, bespoke storage, timber benchtops and an island bench for additional seating. The dining is complete with a day bed, a

Type : House
Price : \$ 1,600,000
Building Size : 220 sqm
Land Size : 1370 sqm
View : <https://www.cantwellproperty.com.au/sale/vic/greater-bendigo-region/castlemaine/residential/house/7845894>

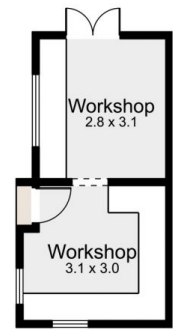
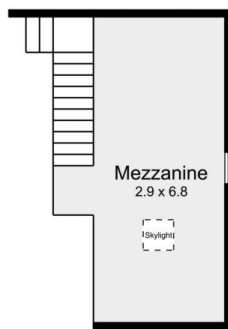
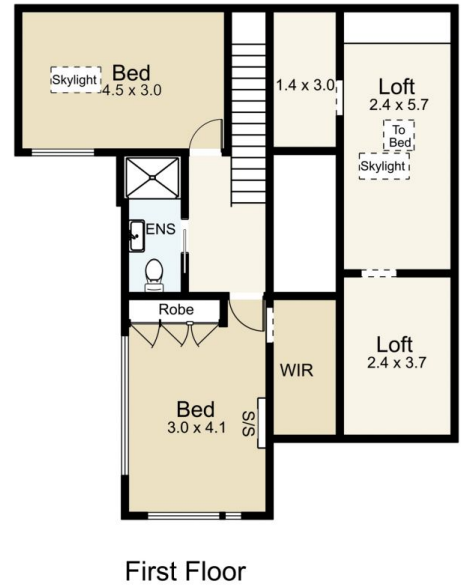


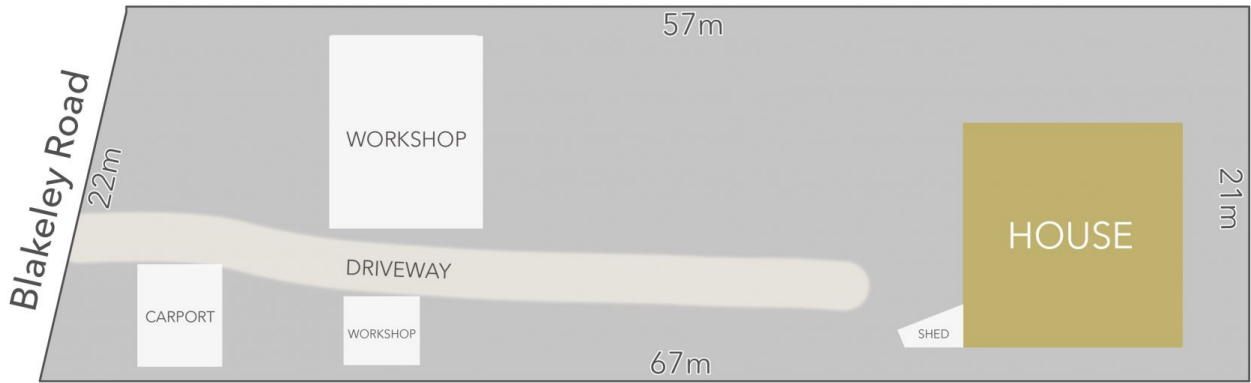
Nick Haslam
03 5472 1122



Tom Robertson
03 5472 1122

[For full version visit the website](#)





LAND AREA : 1370m² (APPROX)

cantwell^{MA}
property castlemaine

28 Blakeley Road, Castlemaine

All Measurements & Details Shown Are Approximate Only.