



42a Doveton Street Castlemaine VIC

1 1

St Elmo's Cottage

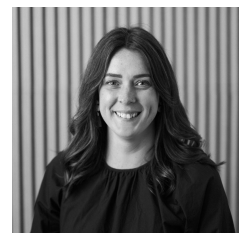
Situated in a quiet garden setting on Doveton Street, away from the road sits this well maintained Victorian cottage. The cottage offers one bedroom, formal lounge area, kitchen with electric cooking and modern bathroom. St Elmo's Cottage throughout boasts ducted heating and cooling to keep you comfortable year around, an external laundry and large garage for storage. The courtyard offers a classic cottage garden providing the perfect space to sit and enjoy the sunshine. This property is able to be offered furnished, with water consumption included. Parking is strictly limited to the street only.

Type : House

View : <https://www.cantwellproperty.com.au/lease/vic/grater-bendigo-region/castlemaine/residential/house/7853264>



Laura Miller
03 5472 1133



Jen Griffiths
03 5472 1133