



## 20 Mount Street Chewton VIC

3 1

Located in the picturesque historic Chewton and quietly tucked steps away from the Forest Creek Track and the Castlemaine Diggings Heritage Park, this three-bedroom home on 924 sqm (approx) offers privacy and sustainability, making for a perfect lifestyle choice.

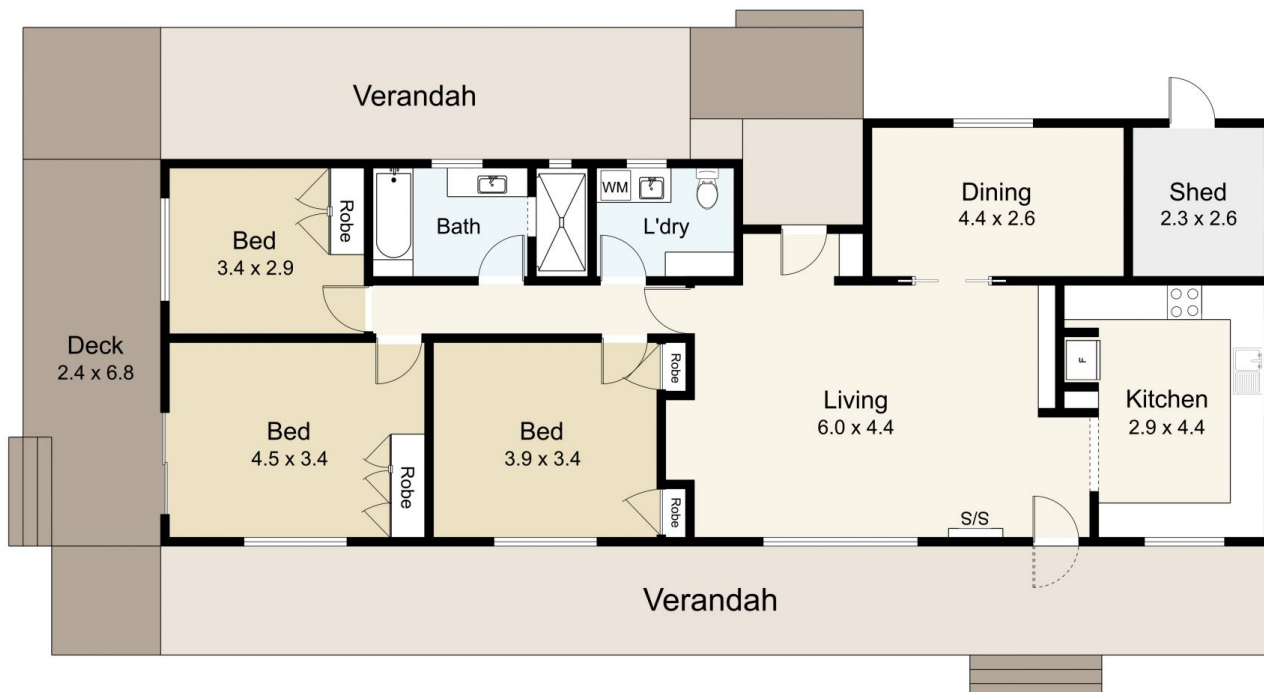
Elevated on its site, a delightful drought-tolerant perennial garden and the borrowed landscape of the neighbouring trees surround the eco home, inviting you to explore. Clad in corrugated iron and weatherboard, a wide verandah wraps around three sides of the house and allows for entertaining on the deck or within the quiet sitting areas in the garden. The updated home features a spacious living area overlooking the garden with sliding doors leading to a dining room with a study nook and a new kitchen with plenty of storage, an induction cooktop with an under-mount oven, and a central island, allowing for

**Price** : \$ 830,000  
**Building Size** : 116 sqm  
**Land Size** : 924 sqm  
**View** : <https://www.cantwellproperty.com.au/sale/vic/greater-bendigo-region/chewton/residential/house/7896631>



**Tom Robertson**  
03 5472 1133



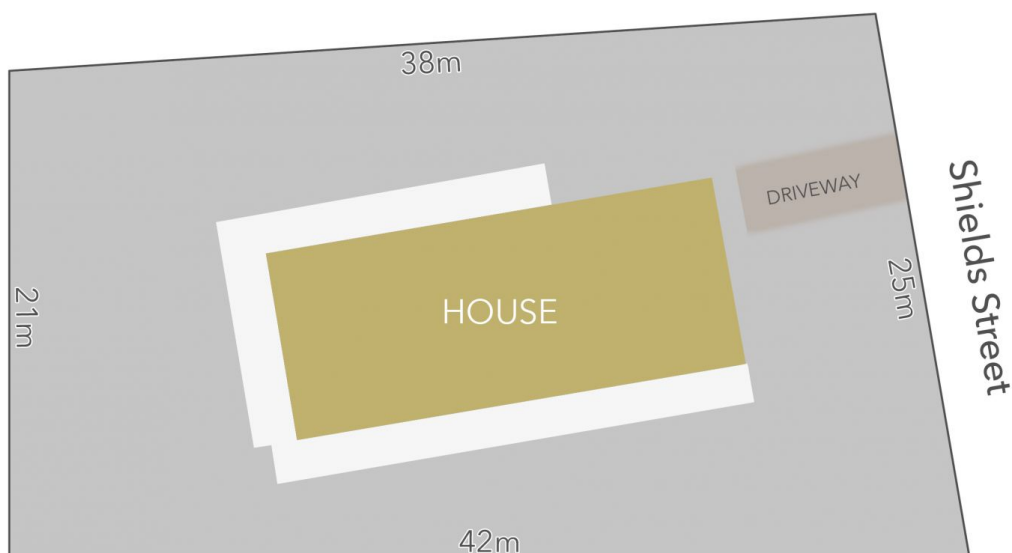


## 20 Mount Street, Chewton

SCALE UNIT IS IN METRES

All measurements are approximate and for illustration purposes only. It should not be considered 100% accurate. Interested parties should rely on their own enquiries.

Residence - 116m<sup>2</sup>  
Deck/Verandah - 82m<sup>2</sup>



Mount Street

LAND AREA : 924m<sup>2</sup> (APPROX)



## 20 Mount Street, Chewton

All Measurements & Details Shown Are Approximate Only.