

**19-21 Polsue Street Maldon VIC**

3 1 1

Cute as a button, Herrmann's Cottage is a double-fronted three-bedroom classic Australian Miner's Cottage, offering an escape to the country as an ideal investment opportunity, home base or weekend getaway. Private and on a generous 2139 sqm (approx) of gardens, the dual driveway entry allows for subdivision potential (STCA). Shop, eat and drink, stay, and explore the historic township of Maldon and the town's selection of beautiful retail shops, cafes, and activities such as the Victorian Goldfields Railway, Mount Tarrengower, Cairn Curran Reservoir, Porcupine Village, and the Goldfields walking tracks.

Brick pathways meander around the established garden and lead to the front verandah with its slate paving, a perfect spot to sit and reflect. Herrmann Blum purchased the allotment in 1859 and built "a three-roomed weatherboard house with iron roof, two stables and

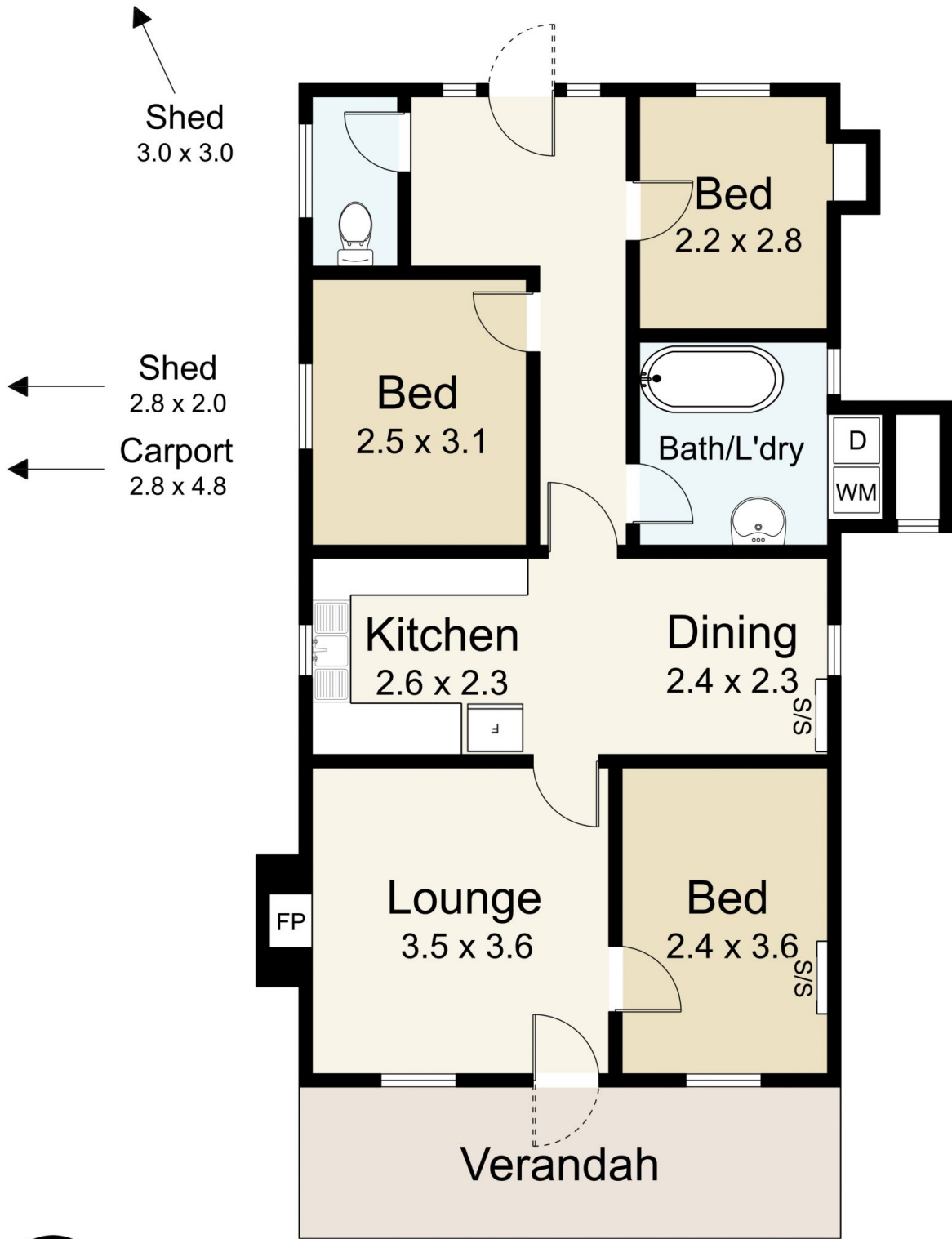
**Price** : \$695,000  
**Building Size** : 70 sqm  
**Land Size** : 2139 sqm  
**View** : <https://www.cantwellproperty.com.au/sale/vic/greater-bendigo-region/maldon/residential/house/7914092>



**Nick Haslam**  
03 5472 1133



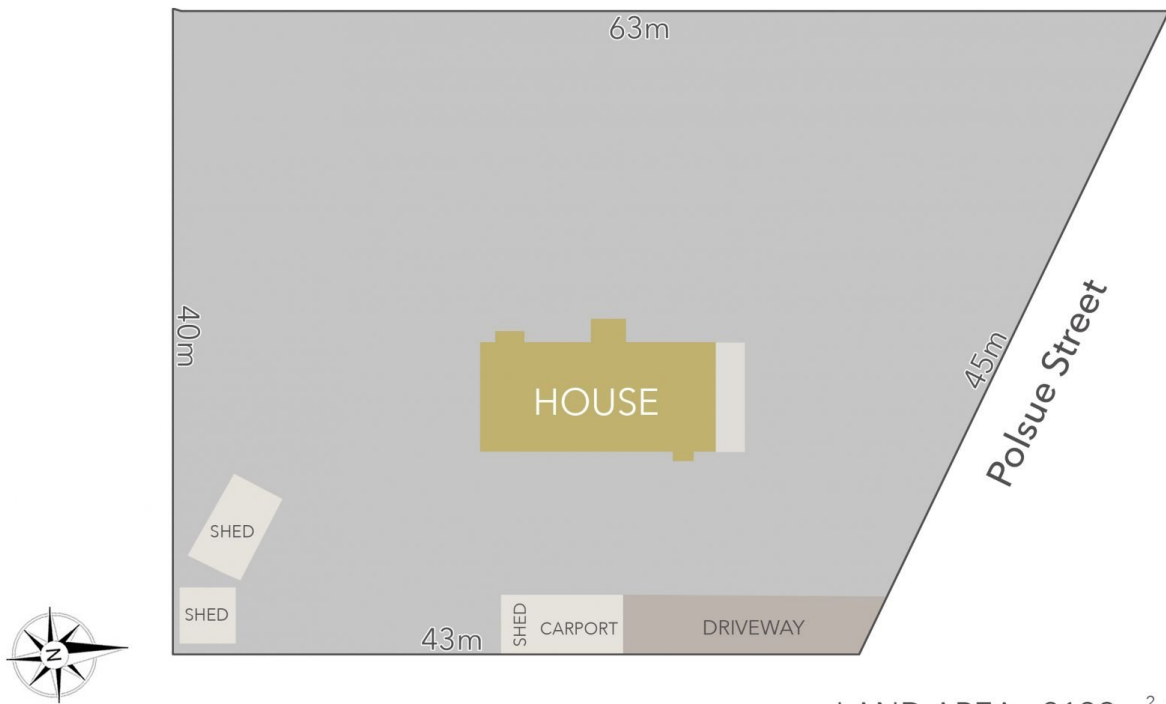
**Megan Walmsley**  
03 5472 1133



19 Polsue Street, Maldon

SCALE UNIT IS IN METRES  
All measurements are approximate and for illustration purposes only. It should not be considered 100% accurate. Interested parties should rely on their own enquiries.

Residence - 70m<sup>2</sup>  
Carport/Shed - 19m<sup>2</sup>



LAND AREA : 2139m<sup>2</sup> (APPROX)



19 Polsue Street, Maldon

All Measurements & Details Shown Are Approximate Only.