

39 Boundary Road Maldon VIC

10 🚗

On offer is this large 1140sqm (approx) industrial warehouse with options galore on a large allotment of 4755sqm only 850m into central historic Maldon and a short drive to Castlemaine, Maryborough, and Bendigo.

Price : \$695,000
Building Size : 1140 sqm
Land Size : 4755 sqm
View : <https://www.cantwellproperty.com.au/sale/vic/greater-bendigo-region/maldon/commercial/industrial/7922262>

Five independent areas within the warehouse provide endless opportunities with potential associated tenants. There is the possibility of a caretaker's residence within the building STCA.

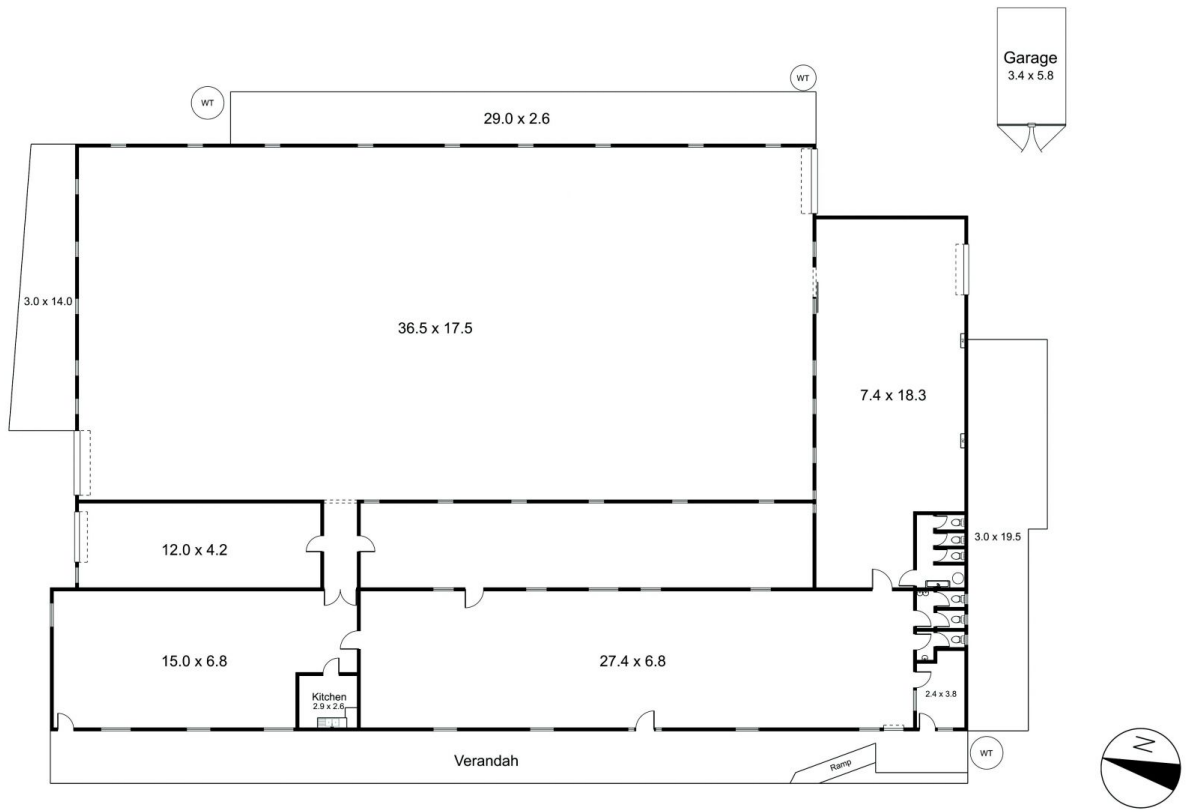
- Five independent spaces:
- 36m x 15.5m with roller door access
- 12m x 4.2m with roller door access
- 15m x 6.8m
- 27.4m x 6.8m
- 7.4m x 18.3m with roller door access



Tom Robertson
03 5472 1133



Megan Walmsley
03 5472 1133



39 Boundary Road, Maldon

SCALE UNIT IS IN METRES

All measurements are approximate and for illustration purposes only. It should not be considered 100% accurate. Interested parties should rely on their own enquiries.

Factory - 1140m²
Garage - 20m²