



51 Farnsworth Street Castlemaine VIC

3 1 2

Welcome to Ashtree Cottage, an elevated double-fronted, three-bedroom Victorian-era home with perfect and uninterrupted views of the historic Burke and Wills Monument, Kalimna Park and the surrounds of Castlemaine. This home stands elegantly behind its hedge, with a brick pathway leading to the bull nose and east-facing verandah. A perfect place to watch the sunrise over the monument and admire the majestic vista over beautiful Castlemaine.

The floorplan features a wide central hallway, two front-facing bedrooms with built-in robes, open fireplaces with stunning ornate period surrounds, and a third bedroom with floor-to-ceiling and wall-to-wall built-in robes. The north-facing living has an open fireplace with an ornate period surround, flanked by built-in shelving and a timber-clad high ceiling. In the rear of the home is the

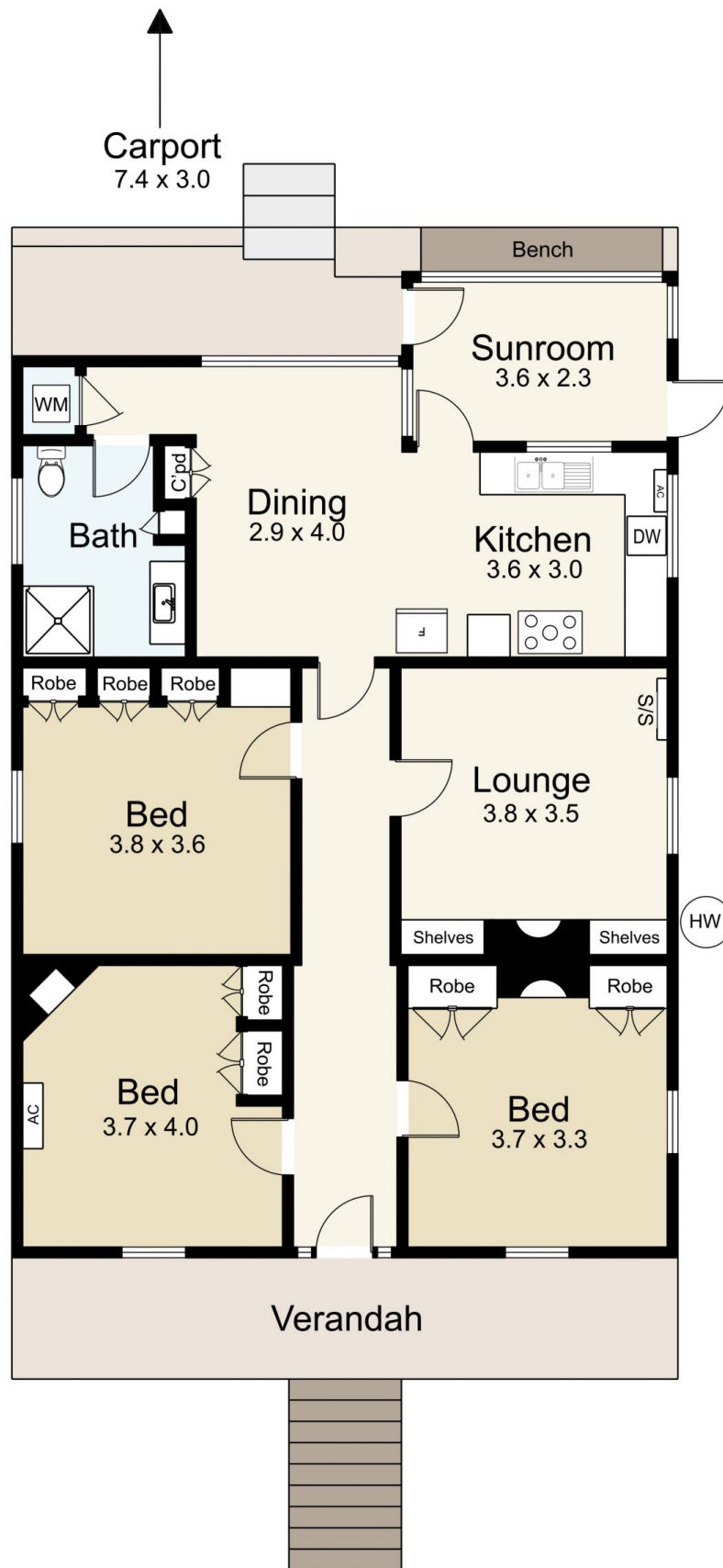
Price : \$849,000
Building Size : 114 sqm
Land Size : 720 sqm
View : <https://www.cantwellproperty.com.au/sale/vic/greater-bendigo-region/castlemaine/residential/house/7956297>

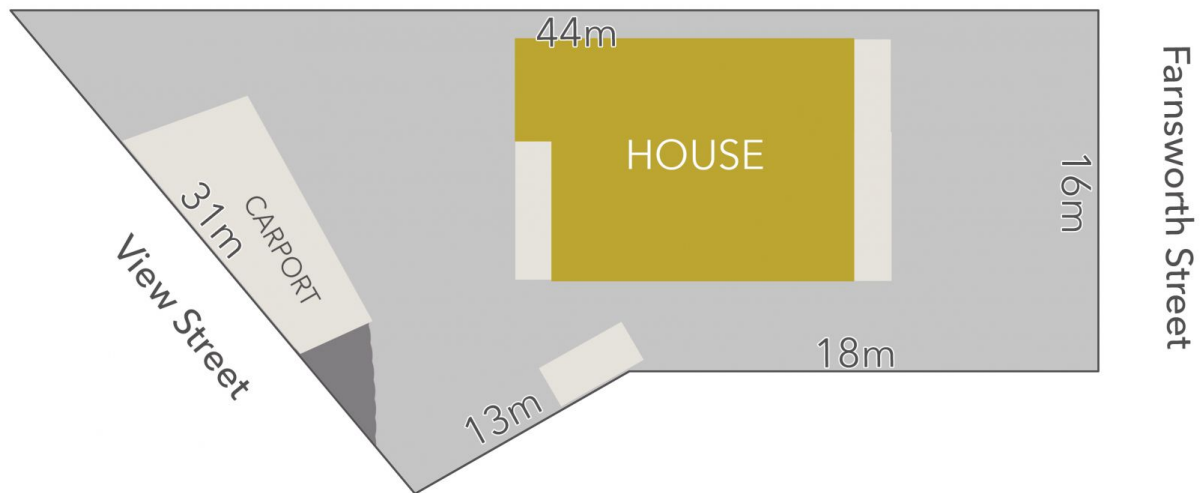


Tom Robertson
03 5472 1133



Megan Walmsley
03 5472 1133





LAND AREA : 720m² (APPROX)



51 Farnsworth Street, Castlemaine

All Measurements & Details Shown Are Approximate Only.