



33 Gingell Street Castlemaine VIC

4 🛏 2 🚿 2 🚗

Elevated on its site and opposite the Camp Reserve, the home of the Castlemaine football club and the weekly farmers market, a short stroll to the train station and into Castlemaine for retail and amenities, the Railway Hotel, and the Mill Complex, sits this solid brick period Art Deco style four bedroom home, aflush with period details.

A formal porch greets you as you enter a central hall, the front-facing lounge room has large period windows that overlook Camp Reserve, a solid wood heater inset in a period brick fireplace and double glass doors lead to the north-facing dining room highlighted by the open fireplace with a period decorative brick surround and the kitchen with its with period cabinets, a dishwasher and a freestanding gas cooktop with an oven inset with a period surround with a mantle. Three bedrooms have built-in robes and servicing these bedrooms is a central bathroom with a shower, vanity

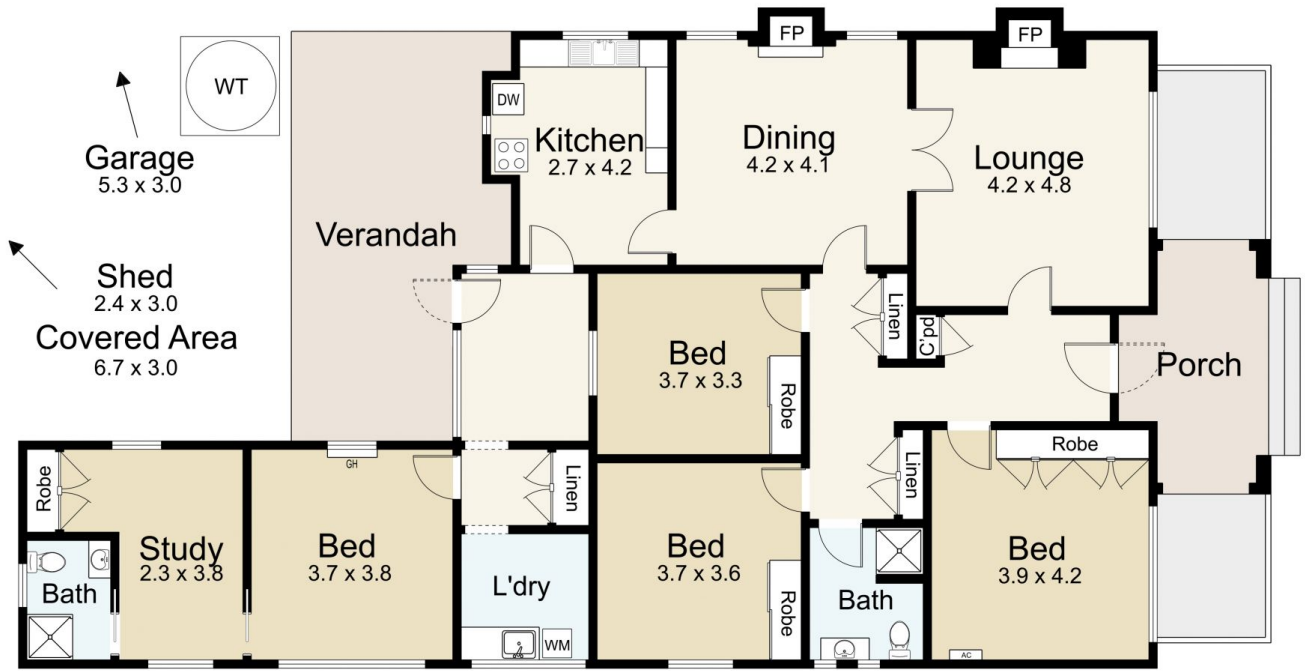
Price : \$939,000
Building Size : 174 sqm
Land Size : 720 sqm
View : <https://www.cantwellproperty.com.au/sale/vic/greater-bendigo-region/castlemaine/residential/house/7976070>



Megan Walmsley
03 5472 1133



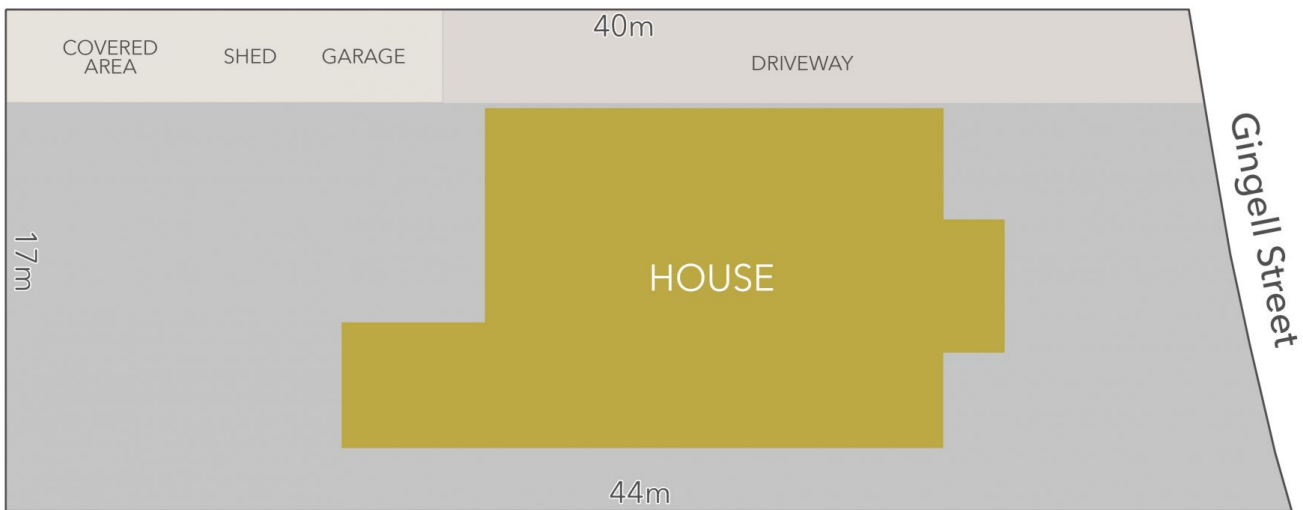
Tom Robertson
03 5472 1133



33 Gingell Street, Castlemaine

Residence - 174m²

SCALE UNIT IS IN METRES
All measurements are approximate and for illustration purposes only. It should not be considered 100% accurate. Interested parties should rely on their own enquiries.



LAND AREA : 720m² (APPROX)

33 Gingell Street, Castlemaine

All Measurements & Details Shown Are Approximate Only.