



**5 Fletcher Street Guildford VIC**

3 2 2

This beautiful, charming and historic home has been nestled in Guildford village since the 1880s when it was once The Farmers Arms Hotel, built and operated by the Swiss-Italian émigré (and district icon) Prospero Passalaqua. In 1919, the next generation of the Passalaqua family converted the hotel into a family home, adding the matchless Edwardian brick frontispiece that so captivates to this day. Arrive at the home via the south end of Ballarat Street (a left turn at Big Tree, the National Trust's current "Tree of the Year") and discover the immense appeal of Villa Passalaqua, tucked away at the end of a cul-de-sac.

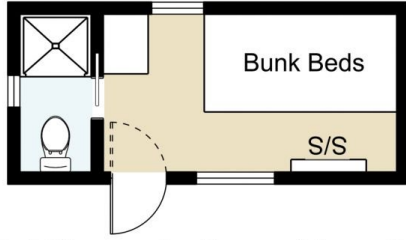
The inviting entryway leads to a broad Castlemaine slate terrace set beneath a classic grapevine-laden pergola, a truly divine outdoor entertaining area that feels like Tuscany in country Victoria! A panelled French door now

**Price** : \$675,000  
**Building Size** : 83 sqm  
**Land Size** : 368 sqm  
**View** : <https://www.cantwellproperty.com.au/sale/vic/greater-bendigo-region/guildford/residential/house/7982684>

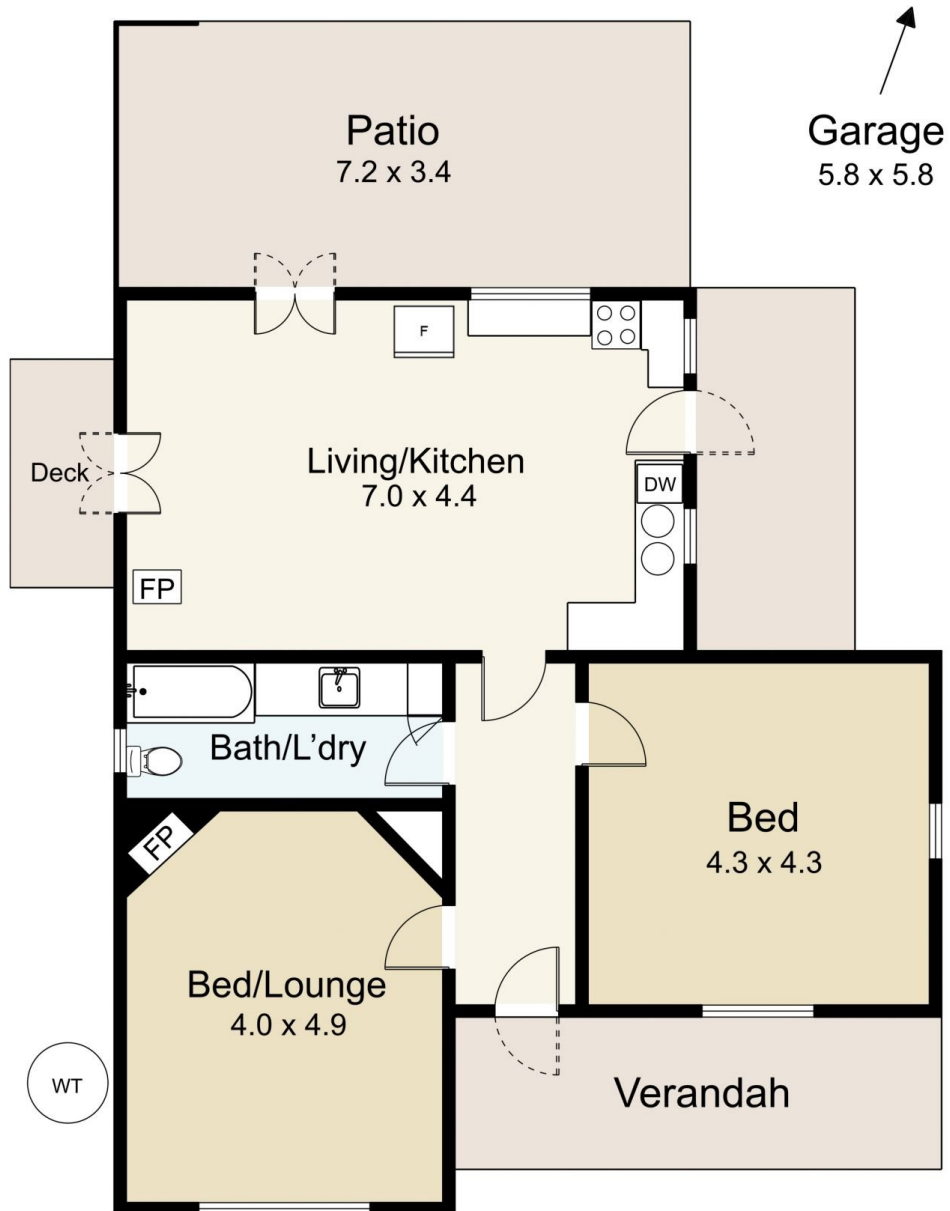


**Nick Haslam**  
 03 5472 1133

Shepherd Hut  
4.6 x 2.0



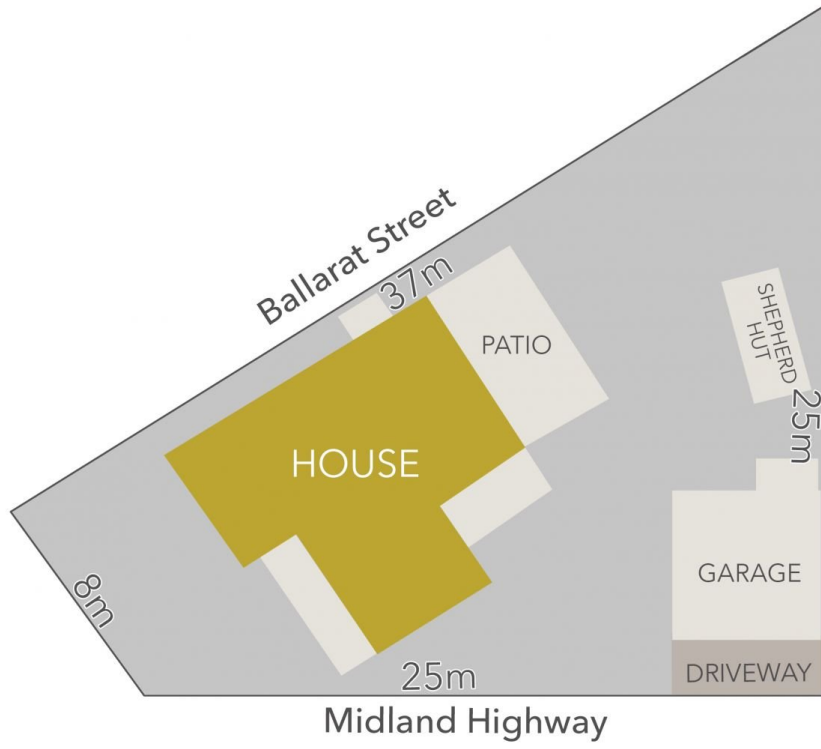
(Not Shown In Correct Location)



5 Fletcher Street, Guildford

SCALE UNIT IS IN METRES  
All measurements are approximate and for illustration purposes only. It should not be considered 100% accurate. Interested parties should rely on their own enquiries.

Residence - 83m<sup>2</sup>  
Shepherd Hut - 9m<sup>2</sup>



LAND AREA : 368m<sup>2</sup> (APPROX)



## 5 Fletcher Street, Guildford

All Measurements & Details Shown Are Approximate Only.