



4 Yulawil Avenue Campbells Creek VIC

3 2 2

This brand-new three-bedroom brick veneer home is ready for you to unpack and design your new lifestyle in the Gunangara Estate. A short drive from the heart of Castlemaine, be part of this new and exciting community!

The floorplan features a generous open-plan kitchen with dining and living. The kitchen features marble-style tiles, a freestanding electric oven with an oven, a dishwasher, a generous walk-in pantry, and an island bench for bar-style seating. The dining and living space has a split system, and a sliding door opens to the 3.5m x 4.4m alfresco entertaining area. A front-facing formal lounge makes for the ideal parent's retreat before entering the main bedroom suite with its spacious walk-in robe and ensuite with a shower, toilet and vanity. Two further bedrooms have built-in robes, and a central bathroom provides a bath, a shower, a vanity and a separate toilet. A generous laundry

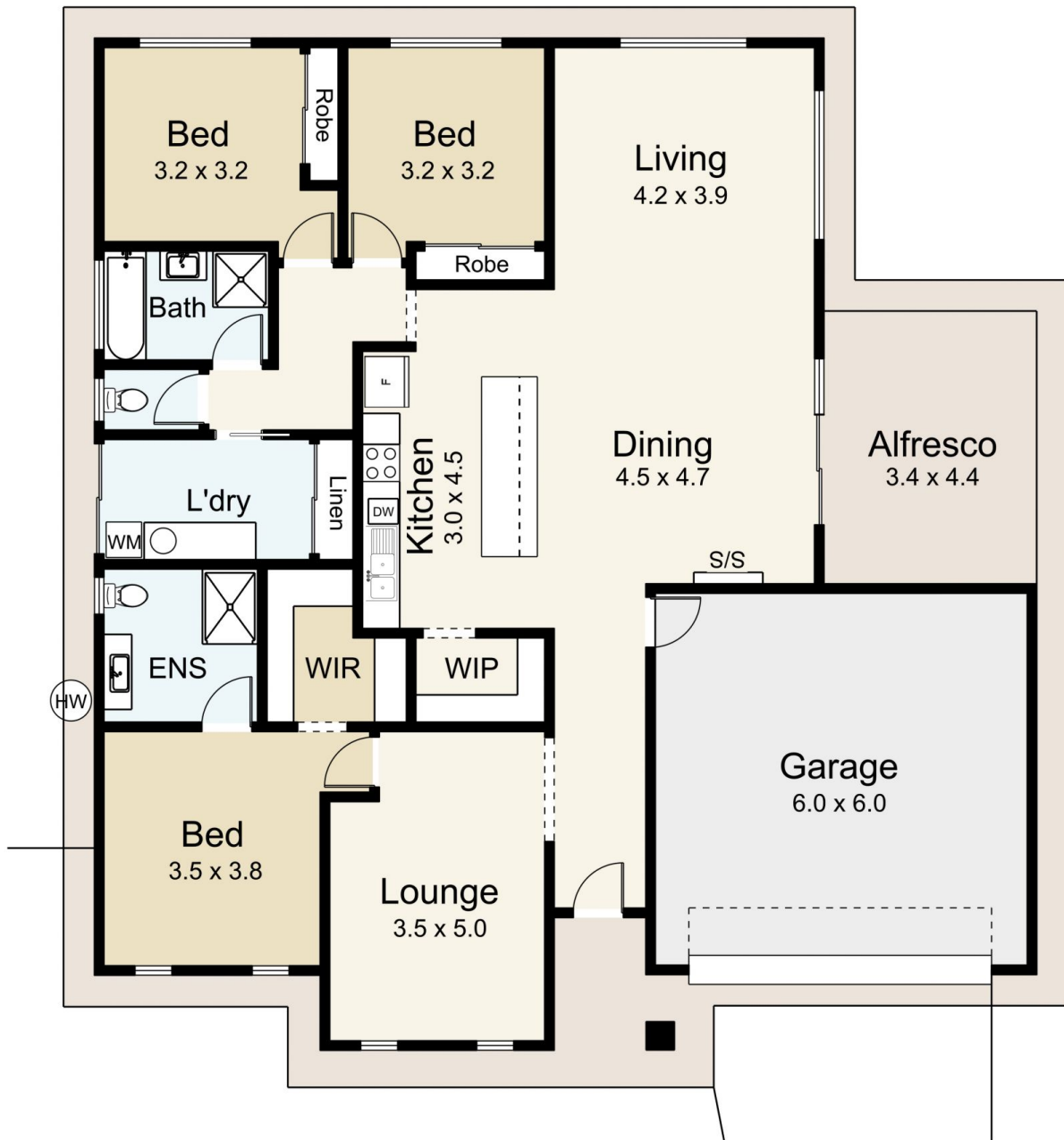
Price : \$695,000
Building Size : 152 sqm
Land Size : 560 sqm
View : <https://www.cantwellproperty.com.au/sale/vic/greater-bendigo-region/campbells-creek/residential/house/7994039>



Tom Robertson
03 5472 1133



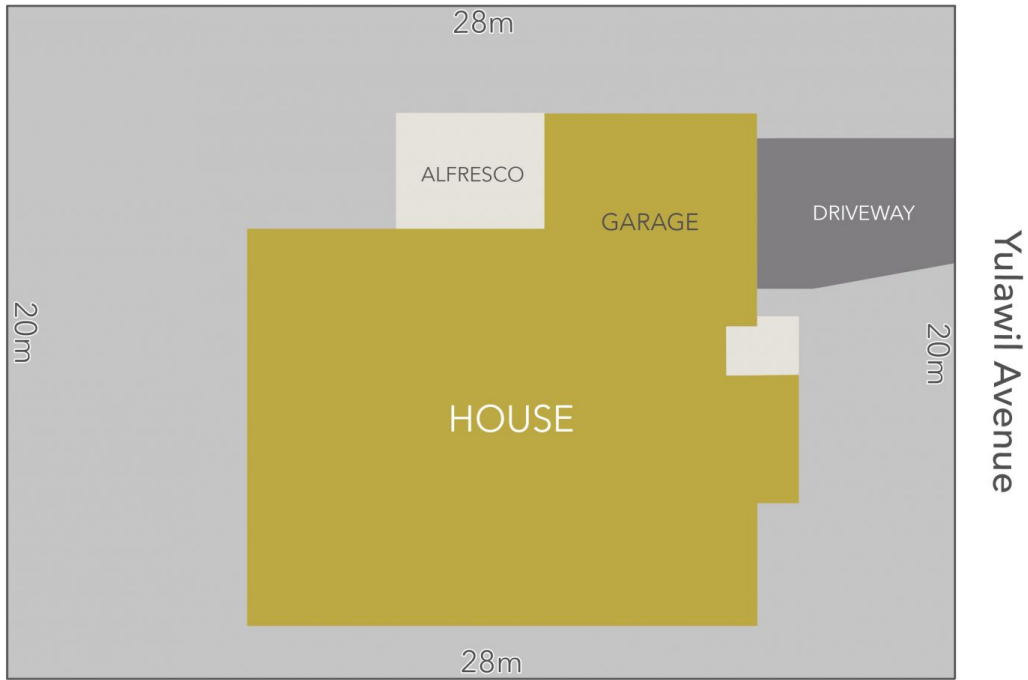
Megan Walmsley
03 5472 1133



4 Yulawil Avenue, McKenzie Hill

SCALE UNIT IS IN METRES
 All measurements are approximate and for illustration purposes only. It should not be considered 100% accurate. Interested parties should rely on their own enquiries.

Residence - 152m²
 Garage - 36m²



LAND AREA : 560m² (APPROX)



4 Yulawil Avenue. McKenzie Hill

All Measurements & Details Shown Are Approximate Only.