



**40 Diamond Gully Road Campbells Creek VIC**

1 1 1

Privately nestled in a peaceful bush setting of 1.9 acres (approx), this contemporary one-bedroom home is an ideal opportunity for downsizers, investors, weekend retreats, or first-time buyers seeking a bush sanctuary. Just six minutes from Castlemaine, for easy access to retail, amenities, and the train service to Melbourne and Bendigo - offering the best of both worlds: serene seclusion and town convenience.

**Type** : House  
**Price** : \$ 570,000  
**Building Size** : 58 sqm  
**Land Size** : 7812 sqm  
**View** : <https://www.cantwellproperty.com.au/sale/vic/greater-bendigo-region/campbells-creek/residential/house/8208274>

Designed for open-plan living, the north-facing layout combines living, dining, and kitchen areas with a step-up to the bedroom, enhancing the sense of space. Natural light floods the home, highlighting the timber floorboards, high ceilings, and the warm, inviting atmosphere. The kitchen features a gas cooktop (bottle gas), an undermount oven,

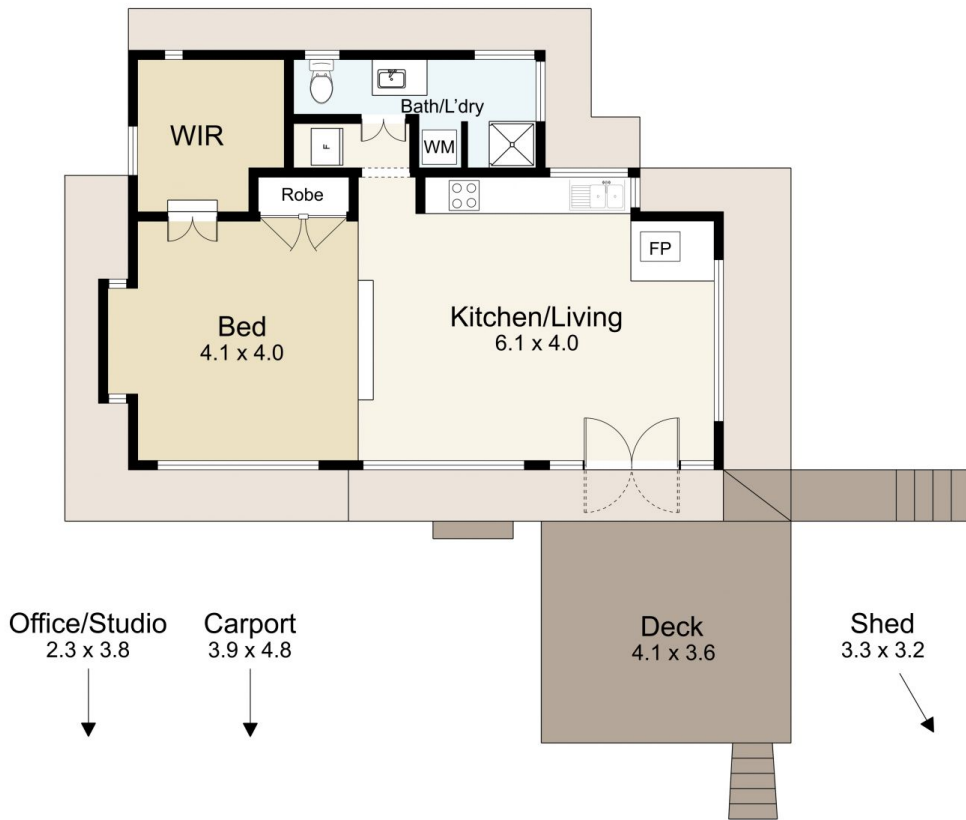
[For full version visit the website](#)



**Tom Robertson**  
03 5472 1122



**Megan Walmsley**  
03 5472 1122

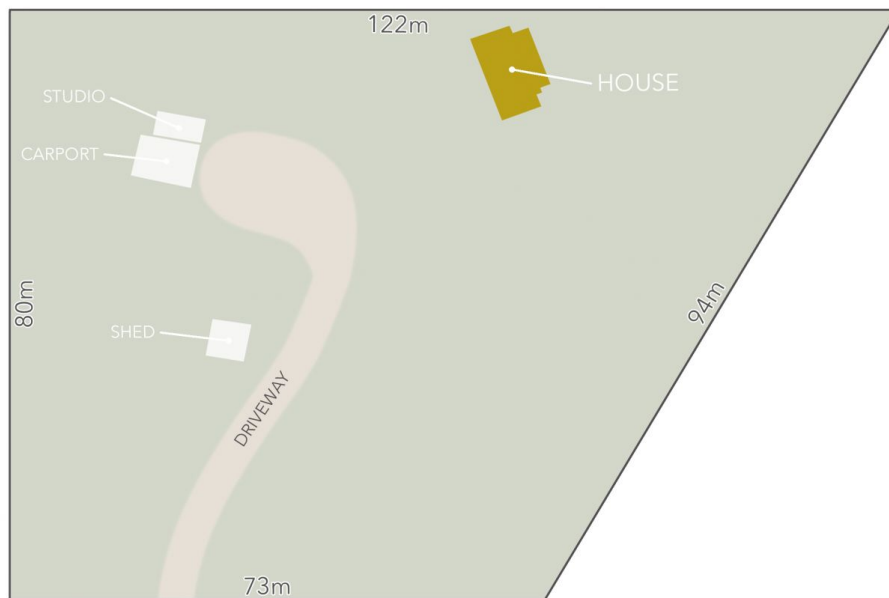


## 40 Diamond Gully Road, Campbells Creek

SCALE UNIT IS IN METRES

All measurements are approximate and for illustration purposes only. It should not be considered 100% accurate. Interested parties should rely on their own enquiries.

Residence - 58m<sup>2</sup>  
Deck - 28m<sup>2</sup>



Diamond Gully Road

LAND AREA : 7,812m<sup>2</sup>(APPROX)



## 40 Diamond Gully Road, Campbells Creek

All Measurements & Details Shown Are Approximate Only.