



65 Railway Road Elphinstone VIC

2 1 2

This mid-century two-bedroom home, while affected by significant smoke damage, presents an excellent opportunity for first-time buyers or savvy investors looking to enter the market in the charming town of Elphinstone. Set on a spacious 1966 sqm (approx.) block, the property offers immense potential-whether you choose to restore its original character through extensive renovations or redevelop it into your dream home (STCA).

Type : House
Price : \$ 250,000
Building Size : 90 sqm
Land Size : 1966 sqm
View : <https://www.cantwellproperty.com.au/sale/vic/greater-bendigo-region/elphinstone/residential/house/8252502>

Located just 80 minutes from Melbourne and 17 minutes from Castlemaine, Elphinstone offers a peaceful, country lifestyle with the convenience of nearby amenities, including a local pub, CFA, post office, and primary school. The existing home features a living area, combined kitchen and dining space, a sunroom, two bedrooms, a central

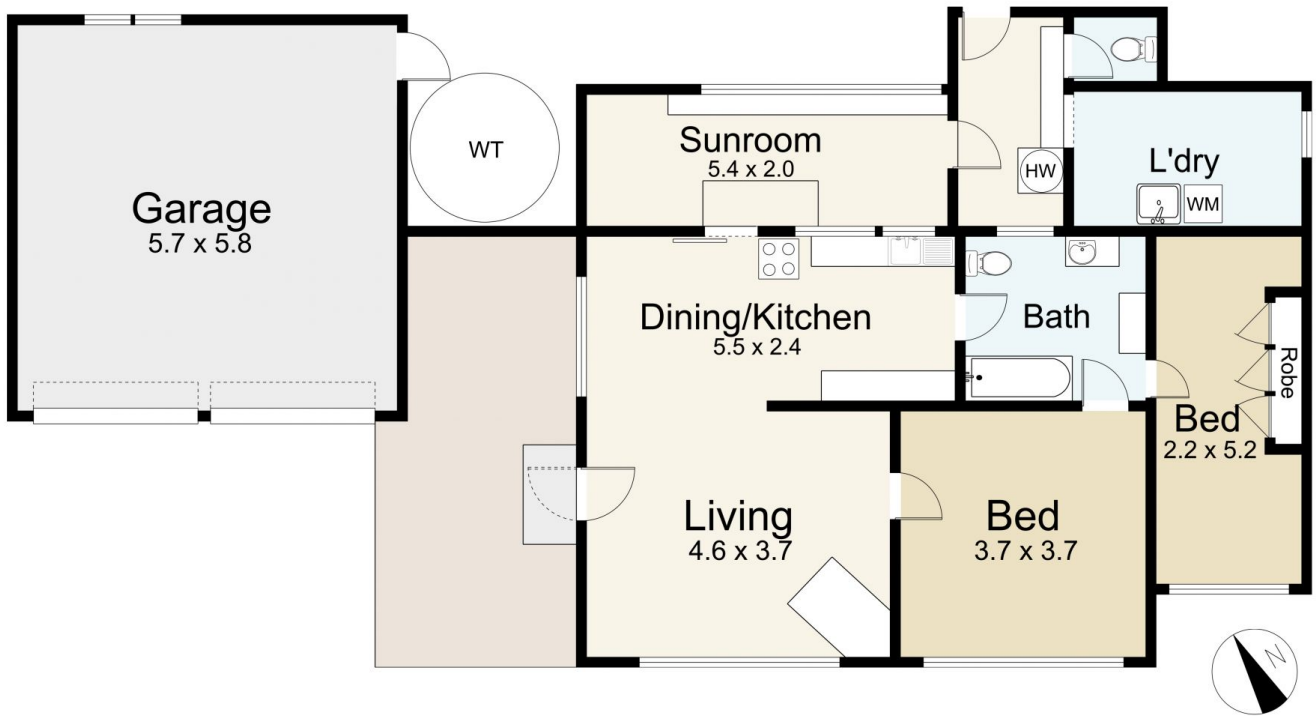
[For full version visit the website](#)



Bianca Wiegard
03 5472 1122



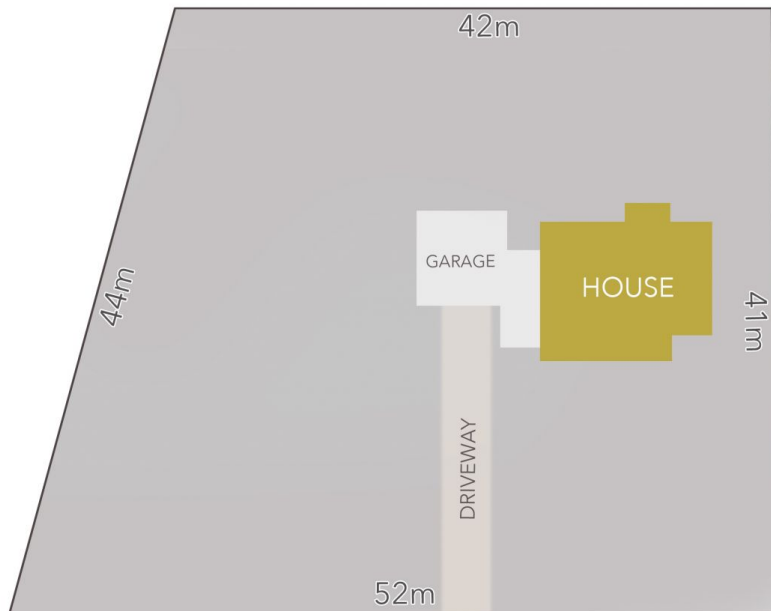
Tom Robertson
03 5472 1122



65 Railway Road, Elphinstone

SCALE UNIT IS IN METRES
 All measurements are approximate and for illustration purposes only. It should not be considered 100% accurate. Interested parties should rely on their own enquiries.

Residence - 90m²
 Garage - 31m²



Railway Road



LAND AREA : 1966m² (APPROX)



65 Railway Road, Elphinstone

All Measurements & Details Shown Are Approximate Only.