

126 Johnstone Street Castlemaine VIC

3 1 2

This well-presented three-bedroom period home offers potential as a first home or investment property. Ideally located with easy access to a walking track leading into Castlemaine and just a short distance from Winter's Flat Primary School, it provides a perfect blend of convenience and privacy.

The floor plan features an entry hall, a spacious living room with a period fireplace surrounded by slate tiles, a large window offering a view of the front garden, and a split system for year-round comfort. Adjoining the living room is a dining space with a skylight and a split system for added comfort. The kitchen features timber benchtops, a freestanding gas cooktop with an oven, and a walk-in pantry. External access opens onto a lovely

Type : House
Price : \$595,000
Building Size : 102 sqm
Land Size : 660 sqm
View : <https://www.cantwellproperty.com.au/sale/vic/greater-bendigo-region/castlemaine/residential/house/8277460>

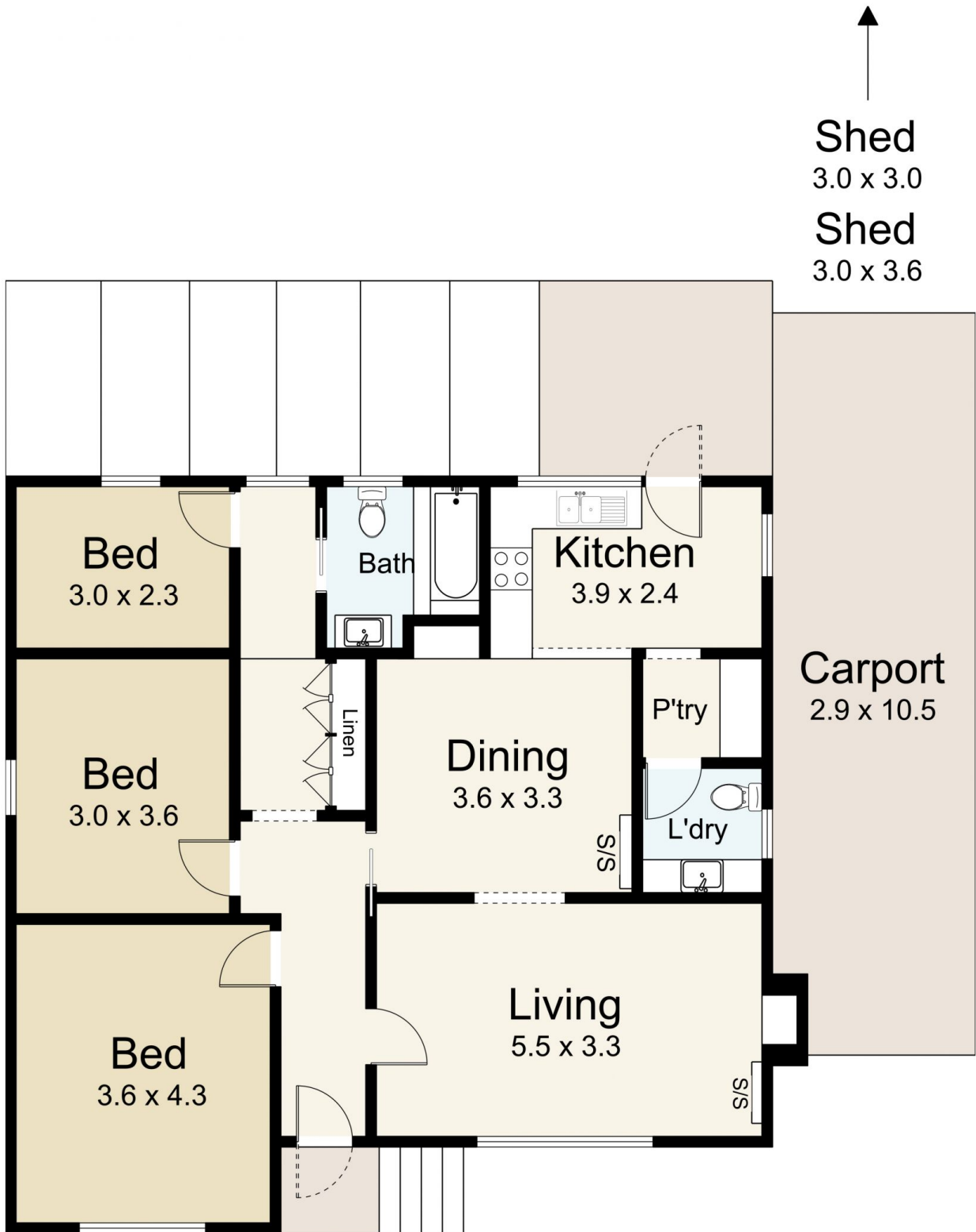


Nick Haslam
03 5472 1122



Megan Walmsley
03 5472 1122

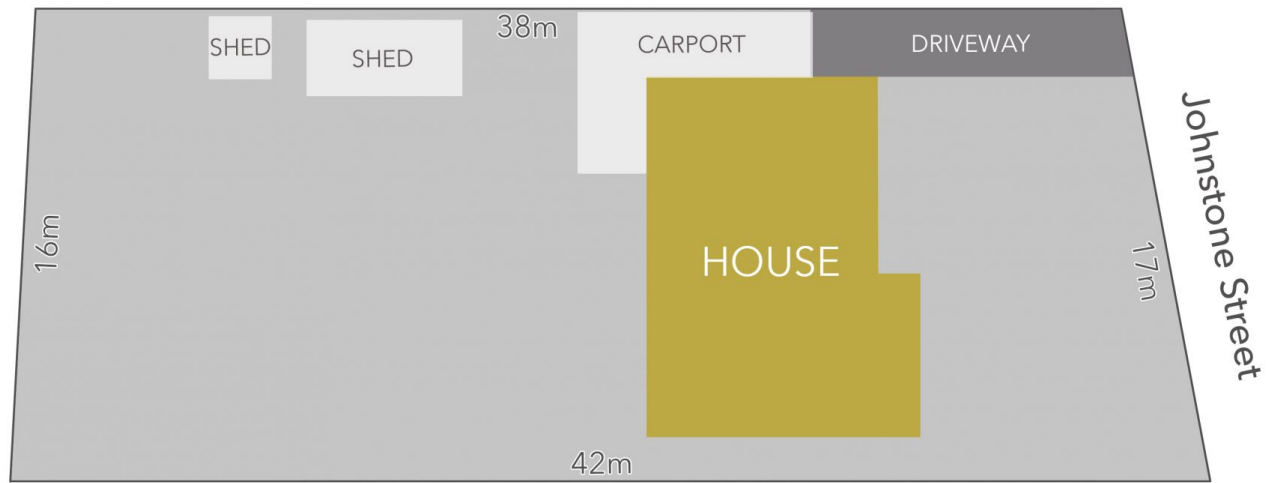
[For full version visit the website](https://www.cantwellproperty.com.au)



126 Johnstone Street, Castlemaine

SCALE UNIT IS IN METRES
All measurements are approximate and for illustration purposes only. It should not be considered 100% accurate. Interested parties should rely on their own enquiries.

Residence - 102m²



LAND AREA : 660m² (APPROX)



126 Johnstone Street, Castlemaine

All Measurements & Details Shown Are Approximate Only.