



12 Andrew Street Castlemaine VIC

3 1 1

Set in an enviable elevated position near the Burke and Wills Monument, this stunning mid-century home offers a rare blend of architectural character, breathtaking outlooks, and lifestyle convenience. On a generous 1234 sqm (approx), just moments from Castlemaine's town centre and metres from the bushland beauty of Kalimna Park, this property delivers timeless design and captivating views.

The light-filled living area is a true centrepiece, showcasing clean mid-century lines and wraparound steel windows that frame uninterrupted vistas over Castlemaine. A striking original Castlemaine slate feature wall houses a built-in gas heater, with ducted heating and evaporative cooling providing comfort throughout the seasons. A side door opens to the full-length front balcony - the perfect spot for

Type : House
Price : \$ 828,000
Building Size : 116 sqm
Land Size : 1234 sqm
View : <https://www.cantwellproperty.com.au/sale/vic/greater-bendigo-region/castlemaine/residential/house/8370154>

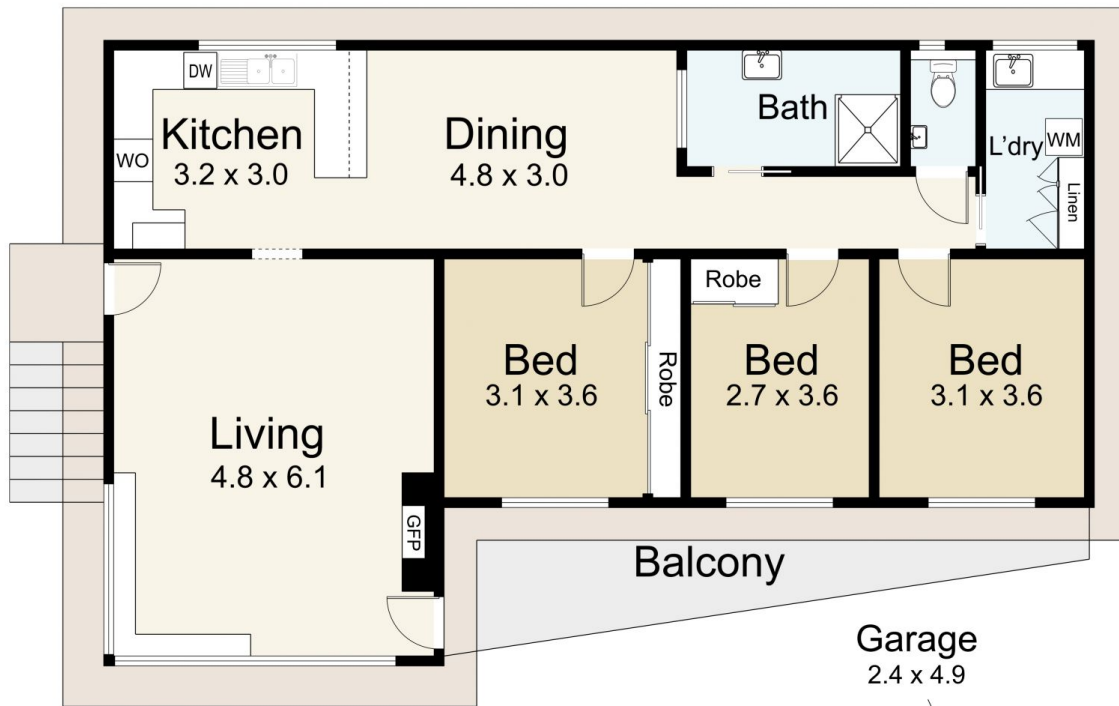
[For full version visit the website](#)



Tom Robertson
03 5472 1122



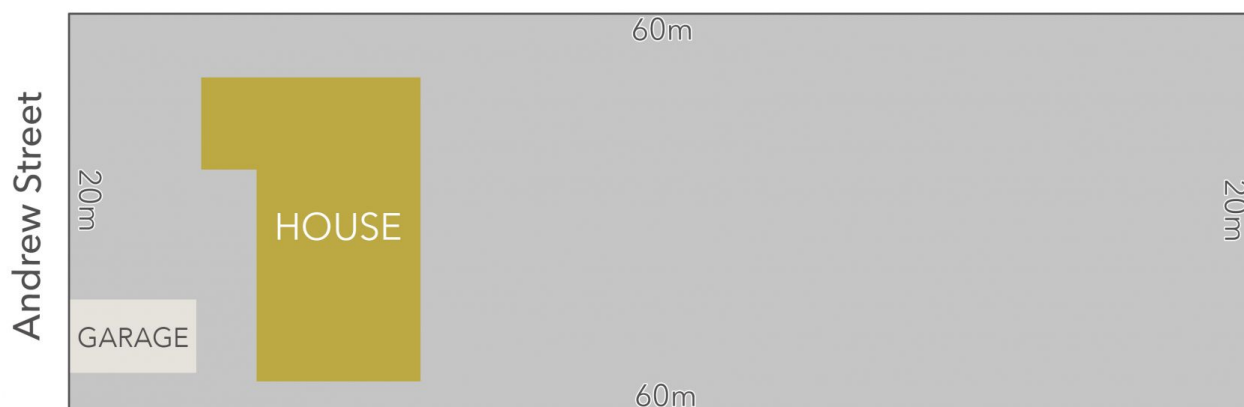
Bianca Wiegard
03 5472 1122



12 Andrew Street, Castlemaine

SCALE UNIT IS IN METRES
 All measurements are approximate and for illustration purposes only. It should not be considered 100% accurate. Interested parties should rely on their own enquiries.

Residence - 116m²
 Garage - 12m²



LAND AREA : 1234m² (APPROX)



12 Andrew Street, Castlemaine

All Measurements & Details Shown Are Approximate Only.