



30 ETTY STREET CASTLEMAINE VIC

3 1

Positioned on a generous 707sqm (approx.) corner allotment, this elevated 1950s-style three-bedroom home offers timeless character, modern comfort, and a north-facing garden outlook, just moments from schools, kindergartens, and local parklands.

Step into a welcoming living room with a period fireplace, gas heater, ceiling fan, and split system, all framed by views of the surrounding landscape. Timber floors lead to the updated kitchen and dining area, featuring a gas cooktop, oven, dishwasher, and ample storage. A mudroom connects to the laundry and a separate toilet for added convenience.

Three bedrooms share a central bathroom with a shower

[For full version visit the website](https://www.cantwellproperty.com.au/sale/vic/greater-bendigo-region/castlemaine/residential/house/8472901)

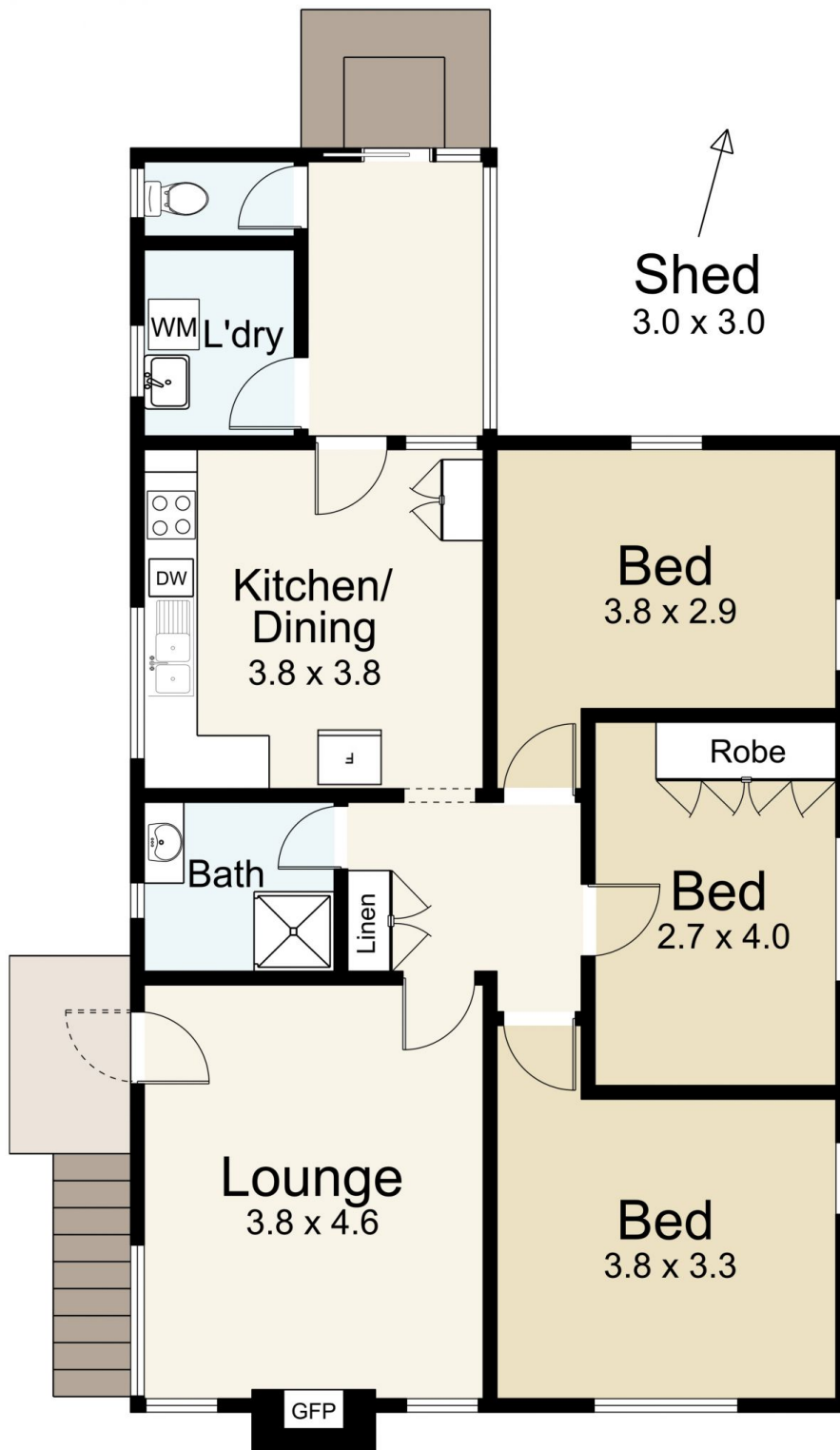
Type : House
Price : \$ 615,000
Building Size : 95 sqm
Land Size : 707 sqm
View : <https://www.cantwellproperty.com.au/sale/vic/greater-bendigo-region/castlemaine/residential/house/8472901>



Tom Robertson
03 5472 1133



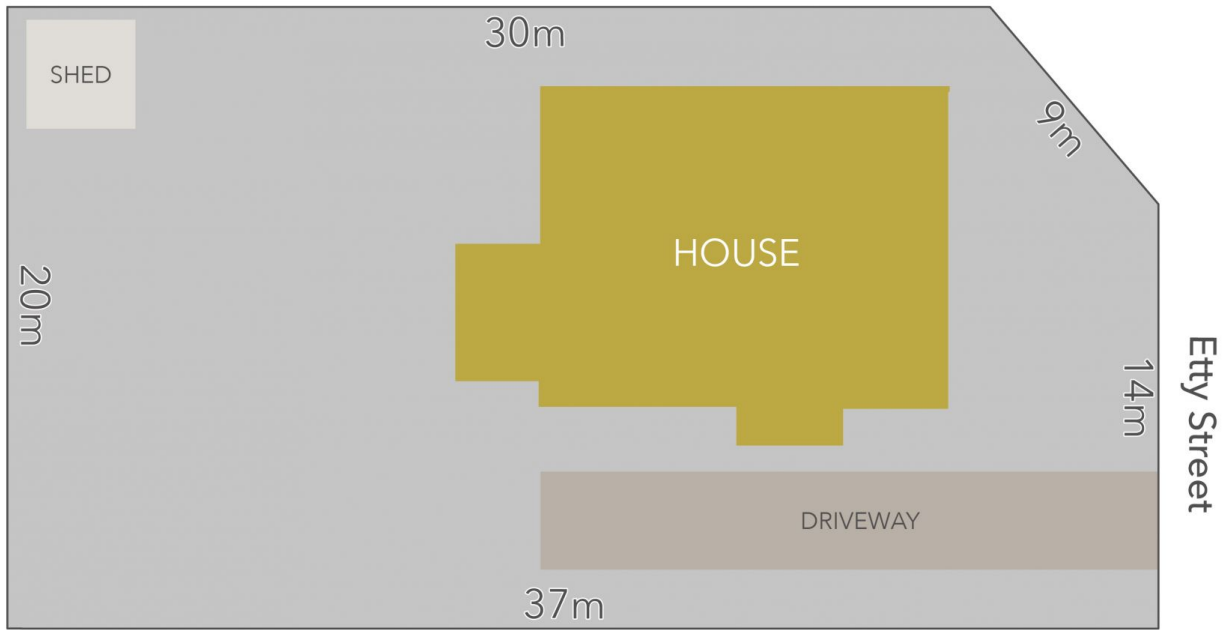
Bianca Wiegard
03 5472 1133



30 ETTY STREET, CASTLEMAINE

SCALE UNIT IS IN METRES
 All measurements are approximate and for illustration purposes only. It should not be considered 100% accurate. Interested parties should rely on their own enquiries.

Residence - 95m²



LAND AREA : 707m² (APPROX)

cantwell^{MA}
property

30 Etty Street, Castlemaine

All Measurements & Details Shown Are Approximate Only.