



12 Lawrence Street Castlemaine VIC

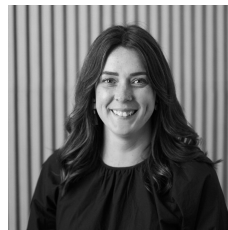
3 1 2

1950s Gem

Experience the charm of this beautifully renovated 1950s three-bedroom weatherboard home located on the corner of Lawrence & Sheehan Street. This inviting family residence seamlessly blends modern living with charming period features and offers stunning views from its generous block. Step inside to find a spacious living room adorned with high ornate ceilings, a cozy gas heater, and elegant plantation shutters. The kitchen is equipped with ample countertop space, plenty of storage, a wood heater, a split system for comfort, and nook for a small table. The master bedroom is situated at the front, while two additional bedrooms offer versatility; the rear bedroom features a split system and an external door leading to a quaint deck. A central modern bathroom, a laundry area, and an additional

Type : House

View : <https://www.cantwellproperty.com.au/lease/vic/gr eater-bendigo-region/castlemaine/residential/house/8516169>



Jen Griffiths
03 5472 1133



Taylor Widdup
03 5472 1133

[For full version visit the website](#)