



133 High Street Maldon VIC

5 🛏 2 🚿 4 🚗

Set on an expansive 1480sqm (approx) garden allotment, just a short stroll to Maldon's historic township, Maldon Primary School, and kindergarten, this c.1890 Victorian residence offers a stunning combination of heritage grandeur and modern sophistication. Elevated and double-fronted, the home's block-fronted façade and bullnose verandah create an inviting first impression, while the original tessellated tile pathway leads you through a garden that feels like a private park.

Inside, the home celebrates its Victorian origins with Baltic pine floors, pressed metal ceilings, and six ornate fireplaces, all complemented by contemporary updates that make everyday living effortless.

Type : House
Price : \$1,485,000
Building Size : 200 sqm
Land Size : 1480 sqm
View : <https://www.cantwellproperty.com.au/sale/vic/greater-bendigo-region/maldon/residential/house/8557272>

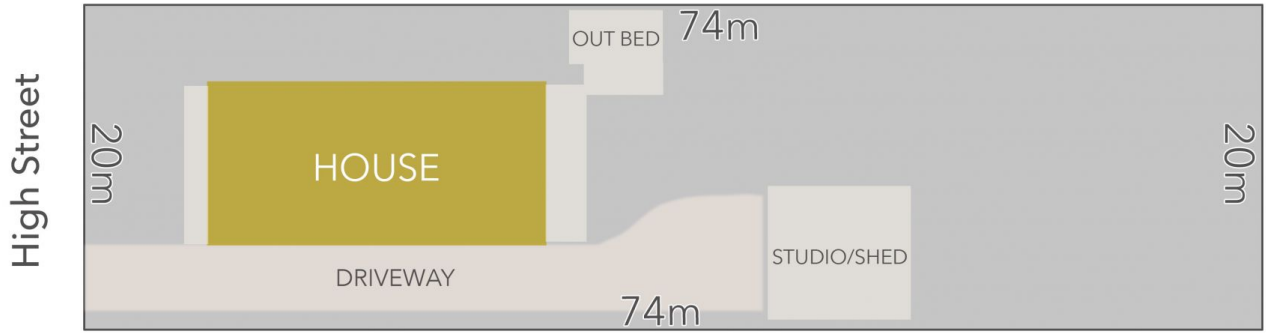
[For full version visit the website](#)



Jeremy Bottomley
03 5472 4122



Tom Robertson
03 5472 4122

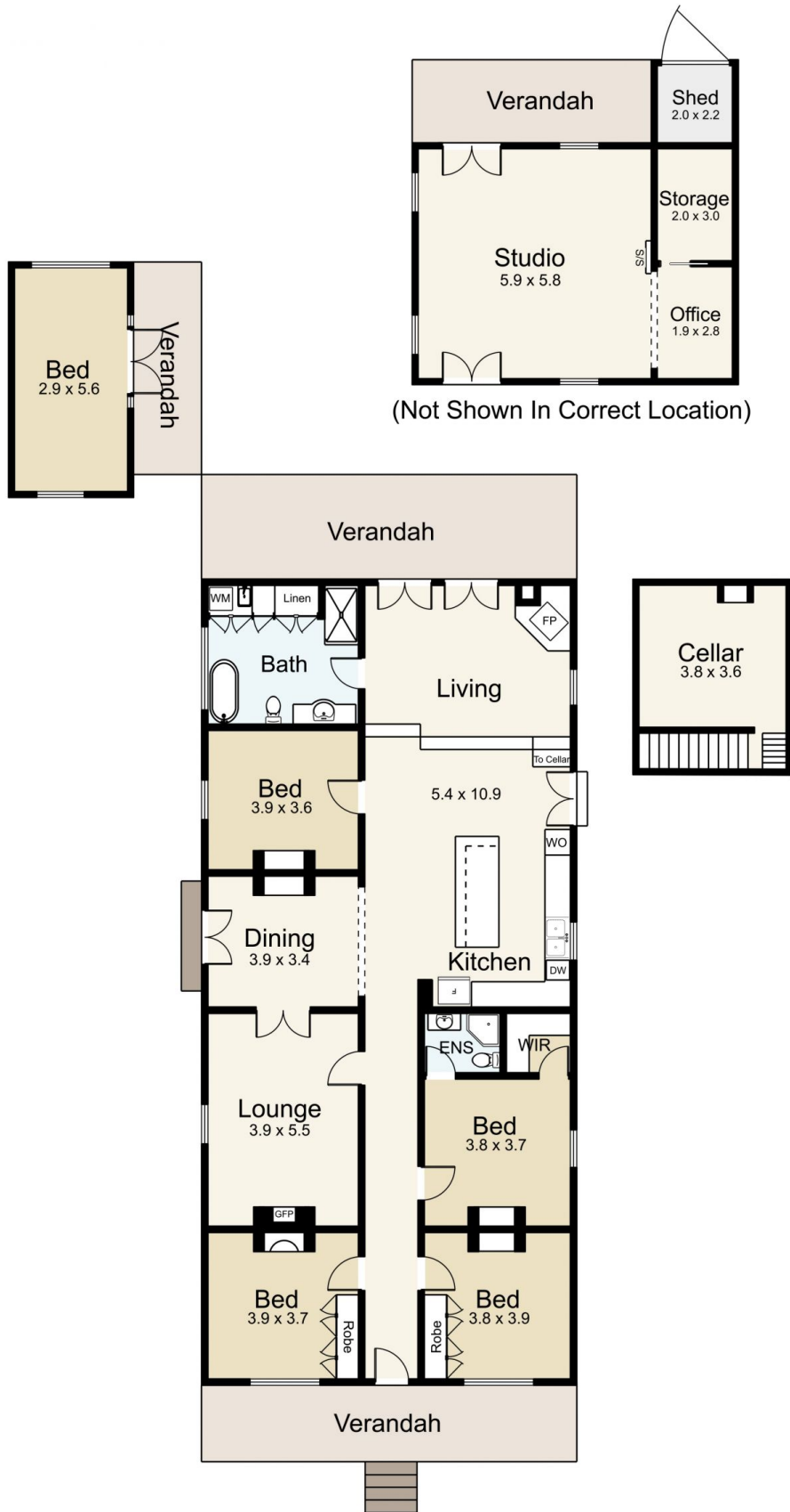


LAND AREA : 1480m² (APPROX)

cantwell^{MM}
property

133 High Street, Maldon

All Measurements & Details Shown Are Approximate Only.



133 High Street, Maldon

SCALE UNIT IS IN METRES
 All measurements are approximate and for illustration purposes only. It should not be considered 100% accurate. Interested parties should rely on their own enquiries.

Residence - 200m²
 Out House - 16m²
 Studio - 46m²