



45 Gingell Street Castlemaine VIC

3 1 1

Opposite the historic Camp Reserve, now housing the Castlemaine Football/Netball Club, and just moments from the station, town centre and local schools, this classic entry-level home delivers fantastic position, potential and promise in equal measure.

High ceilings and period timber floorboards set the tone, with an open plan kitchen, living and dining area forming the heart of the home. Three bedrooms are serviced by an updated bathroom, while a front deck provides a welcoming spot to watch the world go by. The front garden has established almond, bay and cherry trees, and off-street parking adds everyday convenience.

The home has recently been fully re-stumped, alongside

[For full version visit the website](https://www.cantwellproperty.com.au/sale/vic/greater-bendigo-region/castlemaine/residential/house/8604031)

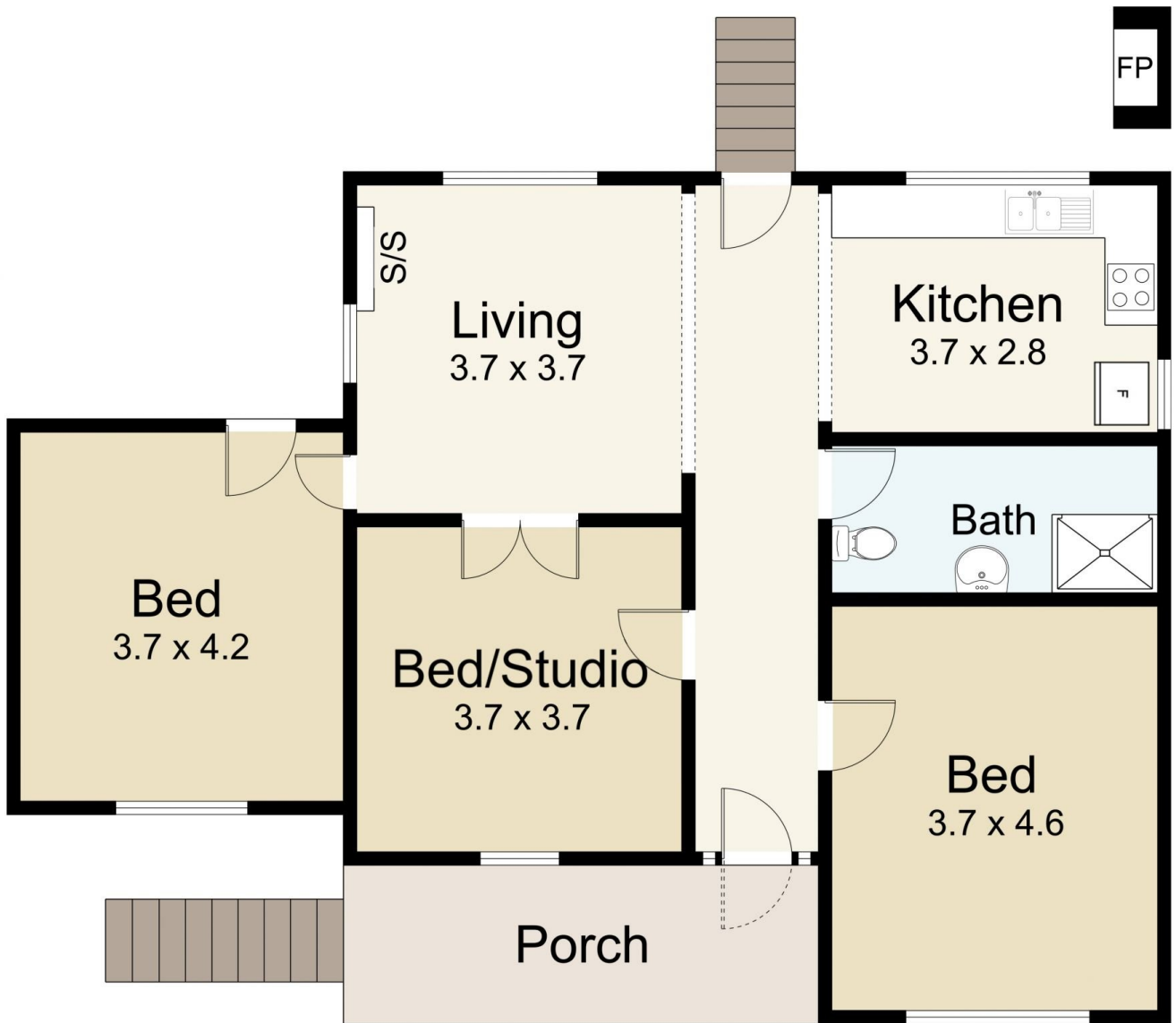
Type : House
Price : \$599,000
Land Size : 513 sqm
View : <https://www.cantwellproperty.com.au/sale/vic/greater-bendigo-region/castlemaine/residential/house/8604031>



Nick Haslam
03 5472 1133



Jeremy Bottomley
03 5472 1133

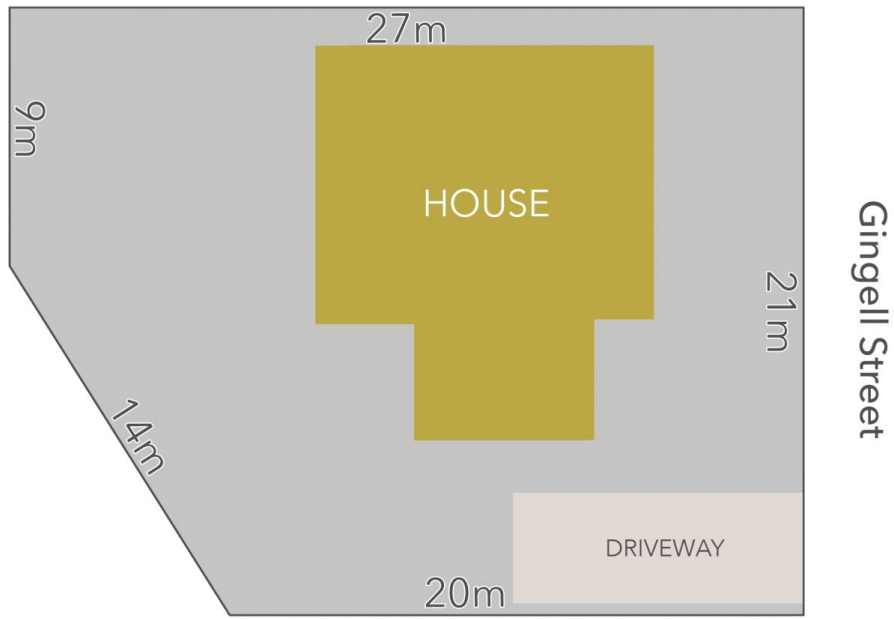


45 Gingell Street, Castlemaine



SCALE UNIT IS IN METRES
 All measurements are approximate and for illustration purposes only. It should not be considered 100% accurate. Interested parties should rely on their own enquiries.

Residence - 92m²



LAND AREA : 513m² (APPROX)

cantwell^{MA}
property

45 Gingell Street, Castlemaine

All Measurements & Details Shown Are Approximate Only.