



**4/6 Johnstone Street Castlemaine VIC**

3 2 3

First time offered for sale. A rare Gem.

Johnstone Terrace offers the rare combination of CBD convenience with a peaceful, rural feel, a true sanctuary in the heart of town.

Thoughtfully designed for comfort and style, the home features hydronic heating, evaporative cooling, ducted vacuuming, double-glazed windows, and polished timber floorboards throughout the main living areas. The beautifully appointed kitchen with a Falcon stove is sure to impress even the most discerning home cook.

Accommodation is generous and versatile, comprising three spacious bedrooms. One bedroom has an ensuite,

[For full version visit the website](#)

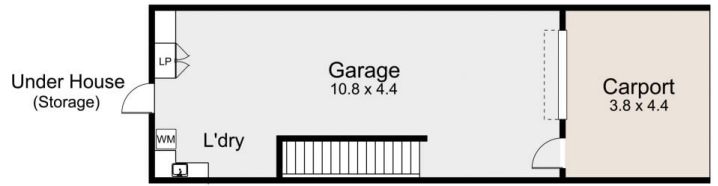
**Type** : House  
**Price** : \$975,000  
**Building Size** : 142 sqm  
**Land Size** : 216 sqm  
**View** : <https://www.cantwellproperty.com.au/sale/vic/greater-bendigo-region/castlemaine/residential/house/8604156>



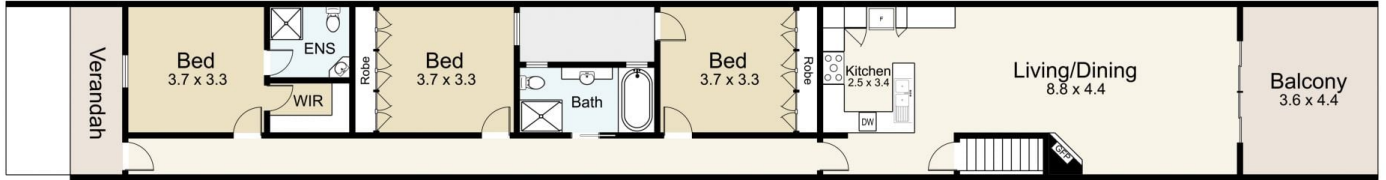
**Jeremy Bottomley**  
03 5472 4422



**Tom Robertson**  
03 5472 4422



Lower Floor



Ground Floor



## 4/6 Johnstone Street, Castlemaine

SCALE UNIT IS IN METRES

All measurements are approximate and for illustration purposes only. It should not be considered 100% accurate. Interested parties should rely on their own enquiries.

Residence - 142m<sup>2</sup>  
Garage/Carport - 64m<sup>2</sup>

