



**1/6 Johnstone Street Castlemaine VIC**

5 🛏 3 🚿 3 🚗

First time offered for sale. A rare Gem.

Forest View offers the rare combination of CBD convenience with a peaceful, rural feel - a true sanctuary in the heart of town.

Thoughtfully designed for comfort and style, the home features hydronic heating, evaporative cooling, ducted vacuuming, double-glazed windows, and polished timber floorboards throughout the main living areas. A separate lounge retreat provides flexibility for relaxation or entertaining, while the beautifully appointed kitchen with a Falcon stove is sure to impress even the most discerning home cook.

**Type** : House  
**Price** : \$1,275,000  
**Building Size** : 196 sqm  
**Land Size** : 349 sqm  
**View** : <https://www.cantwellproperty.com.au/sale/vic/greater-bendigo-region/castlemaine/residential/house/8604270>

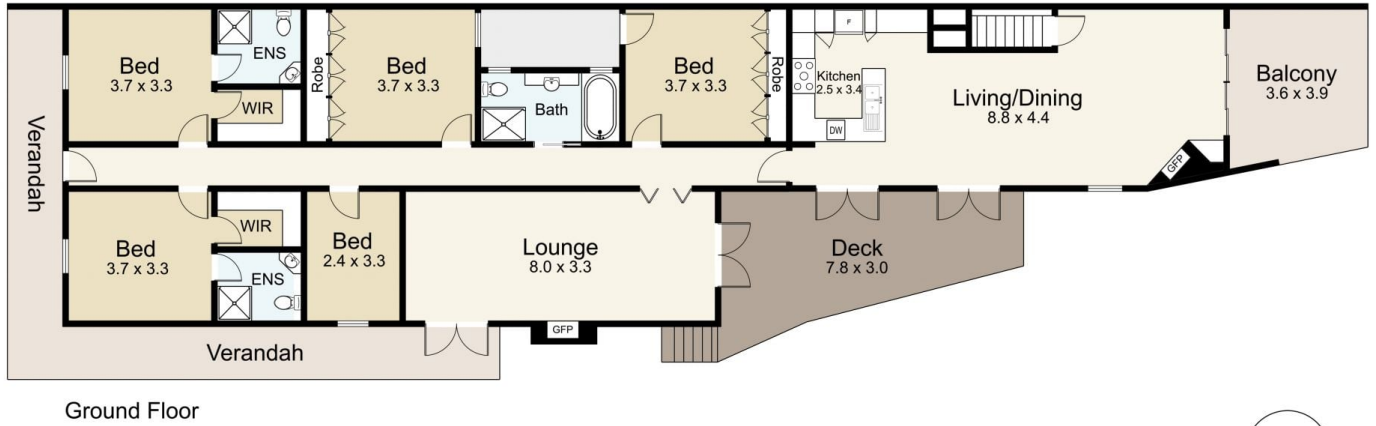
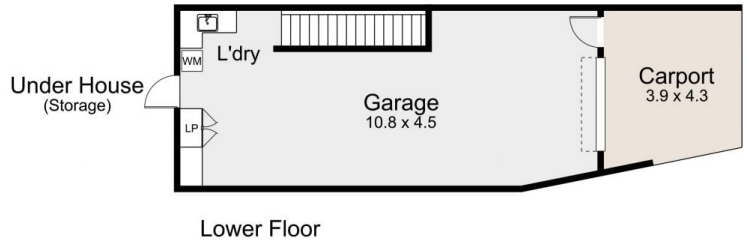


**Jeremy Bottomley**  
03 5472 1122



**Tom Robertson**  
03 5472 1122

[For full version visit the website](https://www.cantwellproperty.com.au)



## 1/6 Johnstone Street, Castlemaine

SCALE UNIT IS IN METRES  
 All measurements are approximate and for illustration purposes only. It should not be considered 100% accurate. Interested parties should rely on their own enquiries.

Residence - 196m<sup>2</sup>  
 Garage/Carport - 64m<sup>2</sup>

