



49 Gingell Street Castlemaine VIC

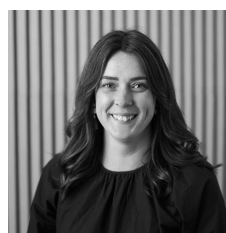
3 2 2

Just moments from Castlemaine's best - the train station, Railway Hotel, Camp Reserve, the Mill Complex, Botanic Gardens, and vibrant shops and eateries - this charming three-bedroom period home blends heritage character with modern ease.

Elevated from the street, the home features a wrap-around verandah and a private north-facing terraced courtyard ideal for relaxed outdoor living. Inside, a light-filled open-plan kitchen, dining and living area overlooks a peaceful landscape. The updated kitchen includes quality appliances, an island bench and direct garage access. The adjoining living room showcases original timber walls, pressed-metal ceilings and an open fireplace (ornamental only).

Type : House
Building Size : 136 sqm
Land Size : 521 sqm
View : <https://www.cantwellproperty.com.au/lease/vic/greater-bendigo-region/castlemaine/residential/house/8608681>

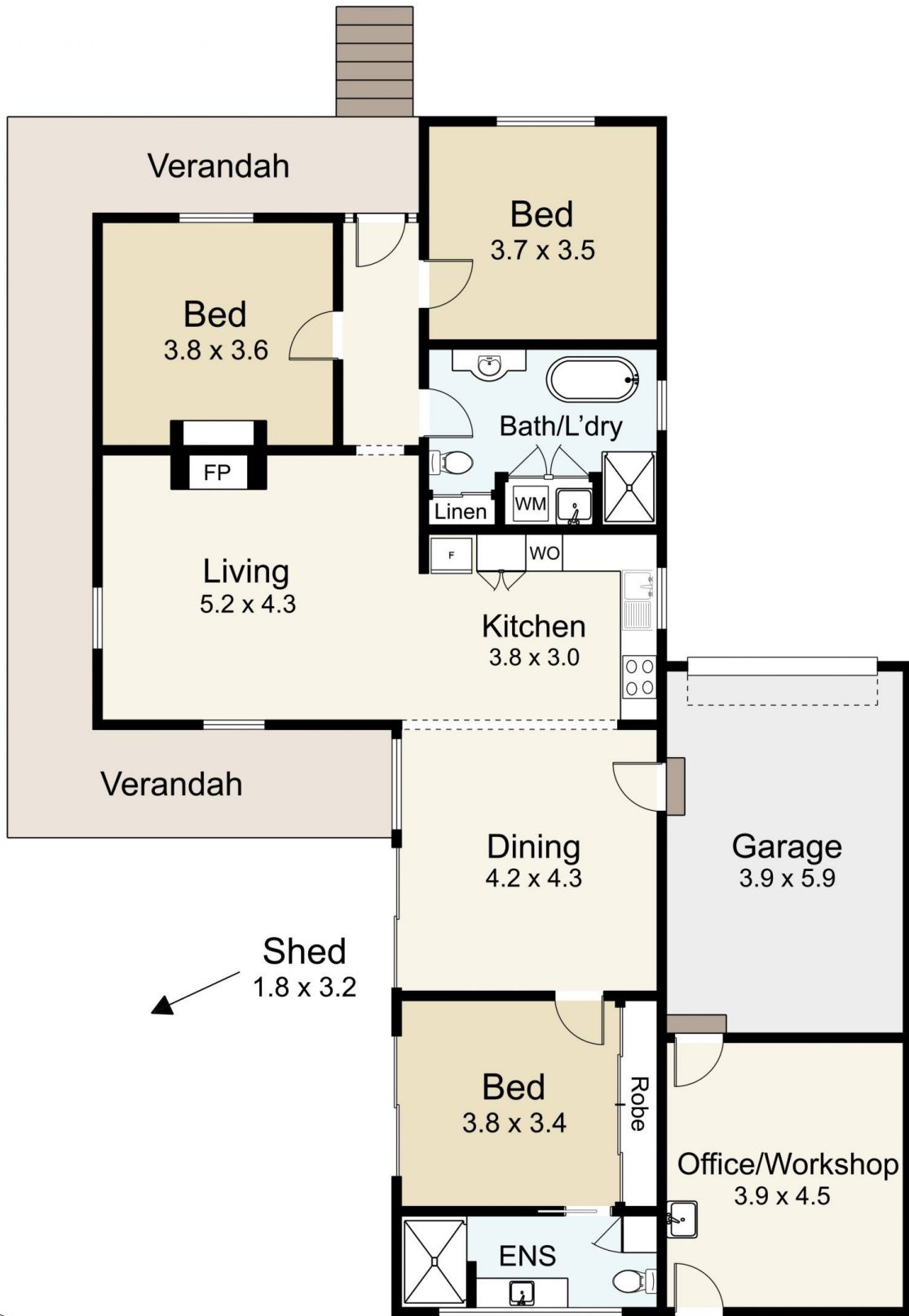
[For full version visit the website](#)



Jen Griffiths
03 5472 1133



Taylor Widdup
03 5472 1133



49 Gingell Street, Castlemaine

SCALE UNIT IS IN METRES
 All measurements are approximate and for illustration purposes only. It should not be considered 100% accurate. Interested parties should rely on their own enquiries.

Residence - 136m²
 Garage - 23m²