



**27 Main Road Campbells Creek VIC**

3 1 2

Set privately behind a high hedge on a generous approx. 869sqm allotment, this updated 1960s home combines warmth, character and modern comfort, an outstanding opportunity for first home buyers, downsizers or those seeking a relaxed lifestyle just minutes from Castlemaine.

Fully fenced and offering two vehicle access points, the home is both practical and private. Inside, timber flooring throughout and large windows create a calm, light-filled atmosphere, with garden outlooks from every room.

The north-facing living room is welcoming and comfortable, featuring a decorative stone feature wall, split system heating and cooling, and a sliding door that opens directly to a spacious enclosed front deck, perfect for year-round

**Type** : House  
**Price** : \$690,000  
**Building Size** : 112 sqm  
**Land Size** : 869 sqm  
**View** : <https://www.cantwellproperty.com.au/sale/vic/greater-bendigo-region/campbells-creek/residential/house/8610857>



**Bianca Wiegard**  
03 5472 1122

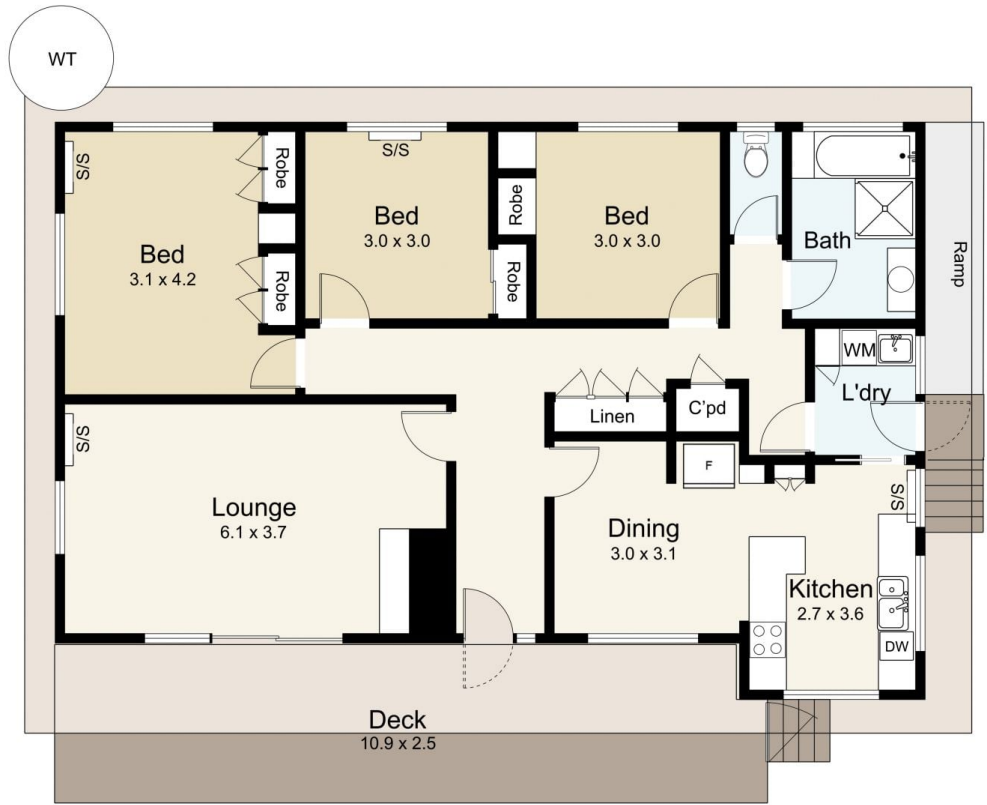


**Nick Haslam**  
03 5472 1122

[For full version visit the website](#)



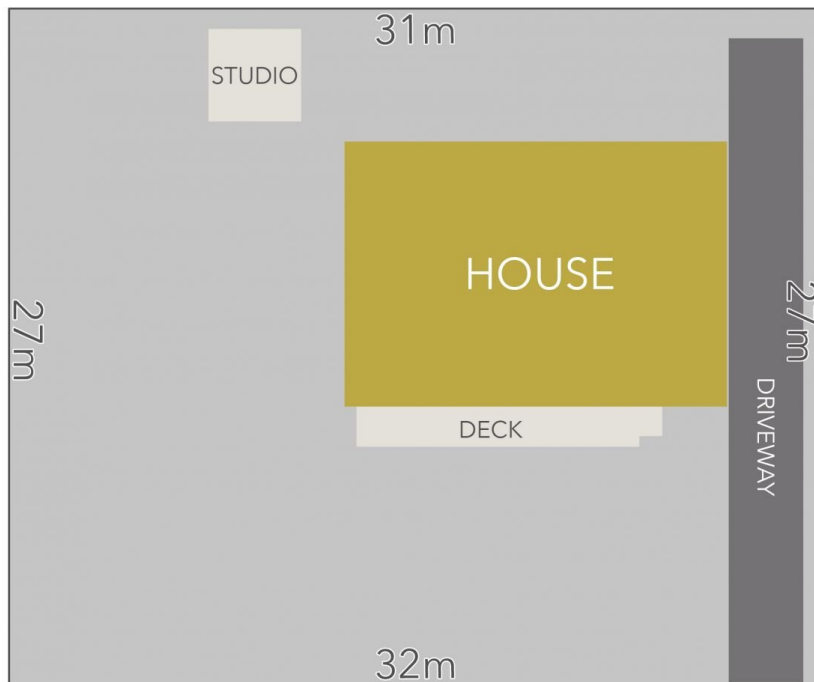
(Not Shown In Correct Location)



## 27 Main Road, Campbells Creek

SCALE UNIT IS IN METRES  
 All measurements are approximate and for illustration purposes only. It should not be considered 100% accurate. Interested parties should rely on their own enquiries.

Residence - 112m<sup>2</sup>  
 Studio - 8m<sup>2</sup>



Main Road

LAND AREA : 869m<sup>2</sup> (APPROX)



## 27 Main Road, Campbells Creek

All Measurements & Details Shown Are Approximate Only.