



4/8 Gaulton Street Castlemaine VIC

2 1 2

Positioned in a quiet, walk-to-town location, this beautifully presented two-bedroom home offers light-filled living, privacy and effortless comfort. Set behind a welcoming front verandah and framed by a pretty, established garden, the home immediately conveys a sense of warmth and ease, with easy access to the much-loved walking paths along Forest Creek, connecting you directly to Castlemaine's town centre and stretching towards Campbells Creek.

The north-facing open plan living and dining area forms the heart of the home, bathed in natural light and thoughtfully designed for relaxed everyday living. A cosy gas log fire creates ambience during the cooler months, complemented by split-system heating and cooling, ceiling fans and an

Type : Unit
Price : \$615,000
Building Size : 81 sqm
Land Size : 268 sqm
View : <https://www.cantwellproperty.com.au/sale/vic/greater-bendigo-region/castlemaine/residential/unit/8614094>

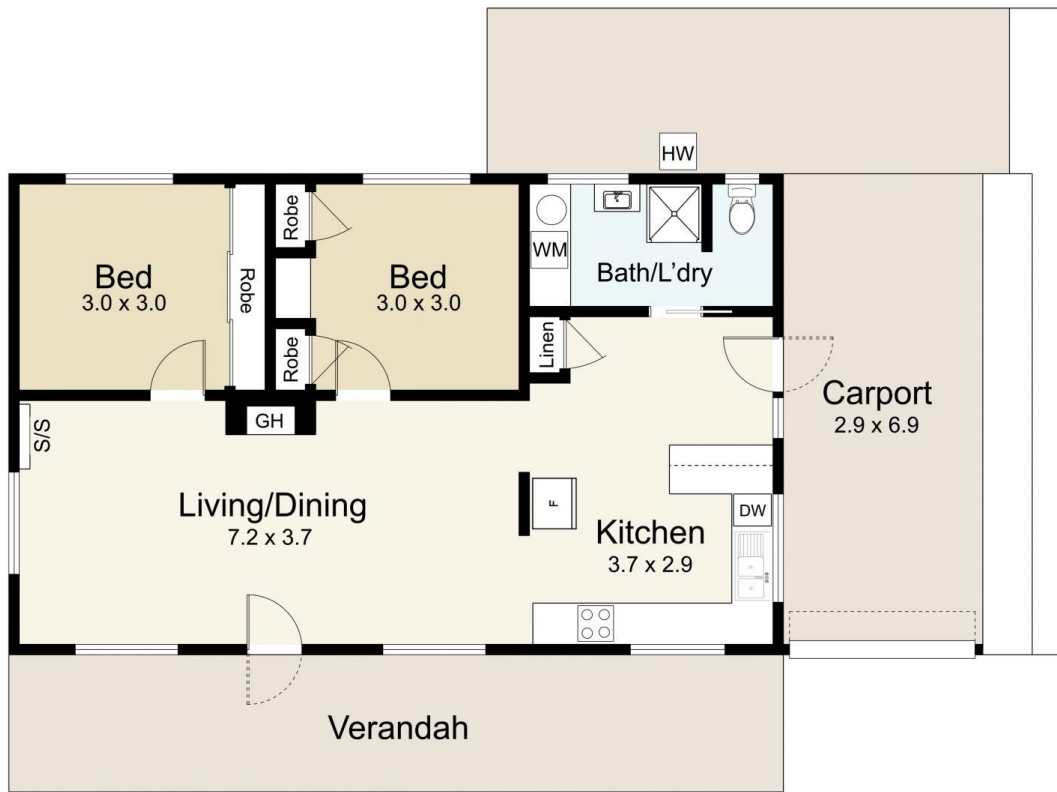
[For full version visit the website](#)



Bianca Wiegard
03 5472 1122



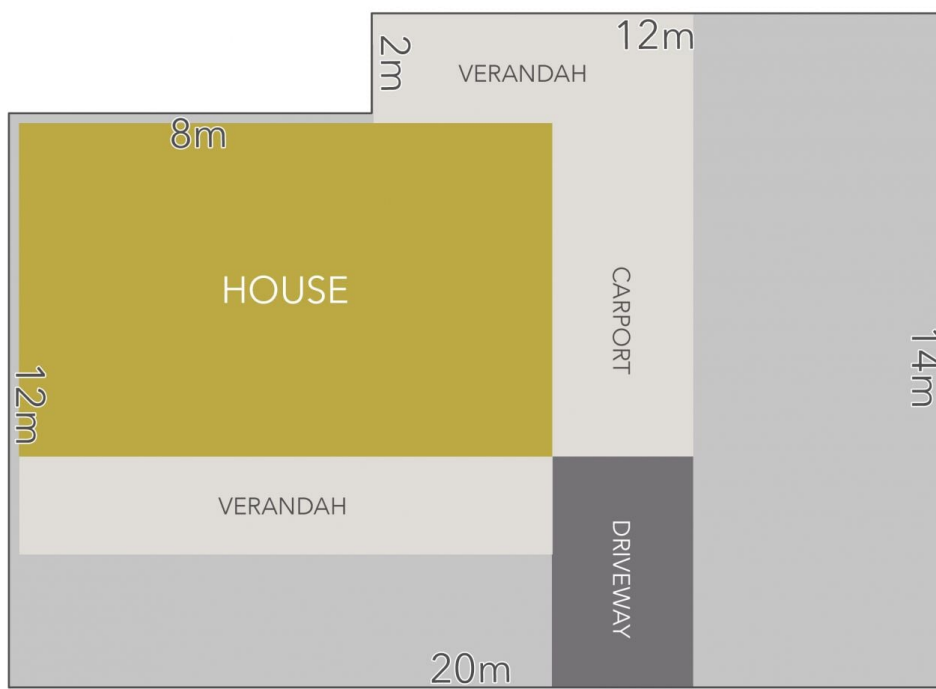
Nick Haslam
03 5472 1122



4/8 Gaulton Street, Castlemaine

Residence - 81m²

SCALE UNIT IS IN METRES
 All measurements are approximate and for illustration purposes only. It should not be considered 100% accurate. Interested parties should rely on their own enquiries.



Gaulton Street

LAND AREA : 268m² (APPROX)



4/8 Gaulton Street, Castlemaine

All Measurements & Details Shown Are Approximate Only.