



49 Fletcher Street Castlemaine VIC

3 2 2

Some homes simply feel good the moment you arrive. This is one of them.

Set on a generous 1014sqm (approx) corner allotment opposite the beautiful and peaceful Kalimna Park, this brick home from the late 1960s, early 1970s is a love letter to an era when homes were built with character, craft and a little theatre. For the retro enthusiast, the design-minded buyer, or the family seeking something with genuine soul, this is your moment.

Step inside and the vintage wallpaper sets the tone immediately, a confident, considered palette running through the entry foyer, hallway, dining room, sunroom, rumpus and all three bedrooms. It's not a quirk; it's a

[For full version visit the website](https://www.cantwellproperty.com.au/sale/vic/greater-bendigo-region/castlemaine/residential/house/8646011)

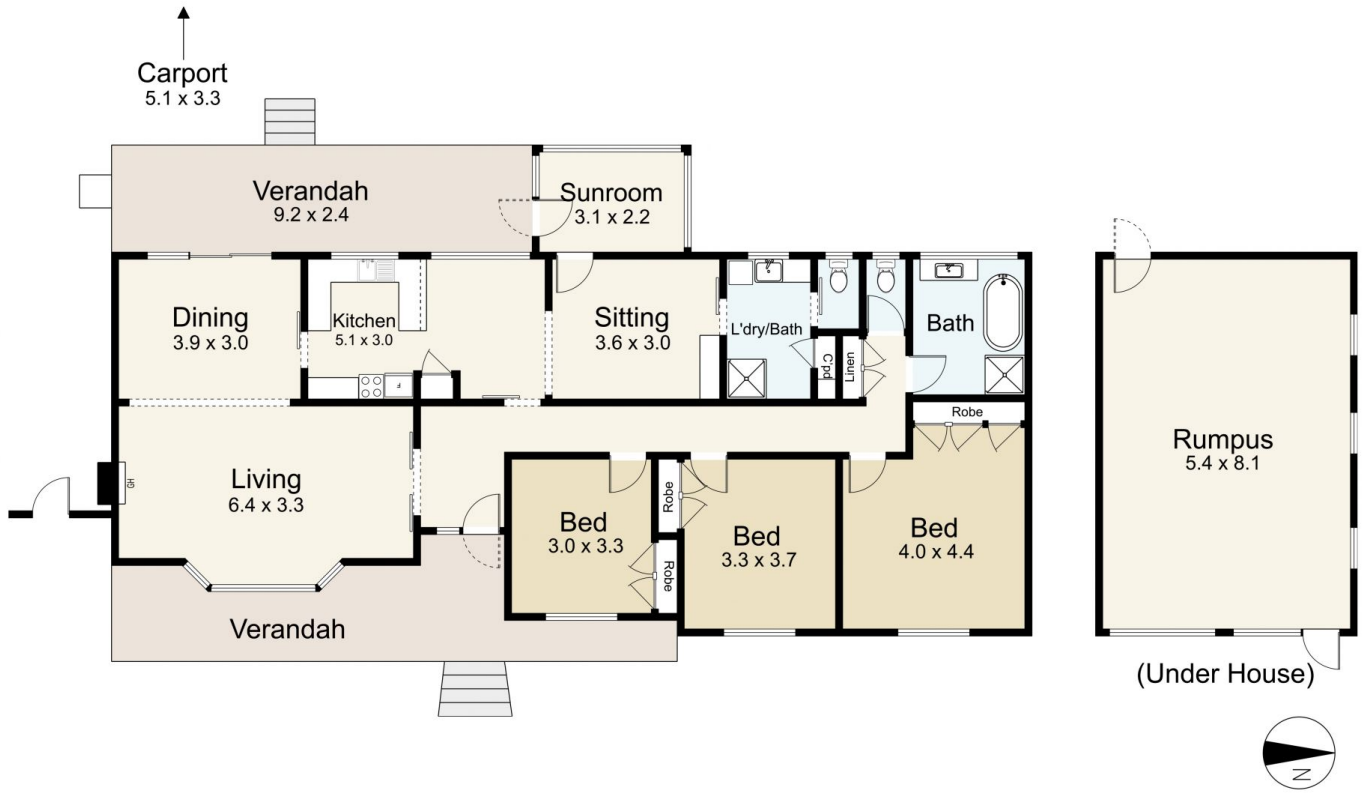
Type : House
Price : \$895,000
Building Size : 186 sqm
Land Size : 1014 sqm
View : <https://www.cantwellproperty.com.au/sale/vic/greater-bendigo-region/castlemaine/residential/house/8646011>



Tom Robertson
03 5472 4422



Jeremy Bottomley
03 5472 4422



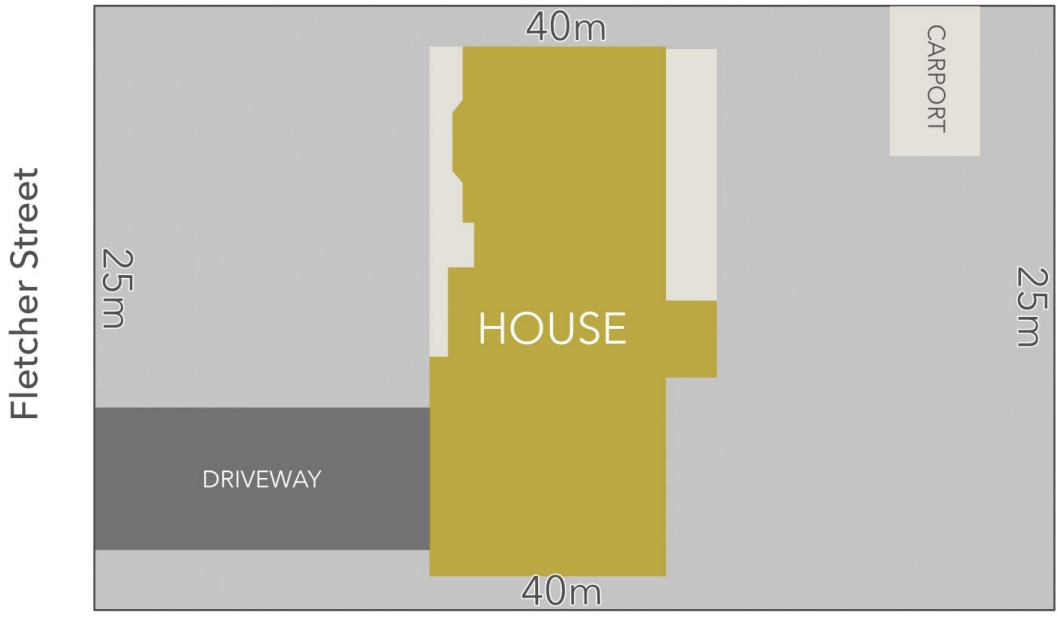
49 Fletcher Street, Castlemaine

SCALE UNIT IS IN METRES
 All measurements are approximate and for illustration purposes only. It should not be considered 100% accurate. Interested parties should rely on their own enquiries.

Residence - 186m²
 Verandah - 43m²

3 1 1

Campbell Street



LAND AREA : 1014m² (APPROX)



49 Fletcher Street, Castlemaine

All Measurements & Details Shown Are Approximate Only.