



24 MacLise Street Castlemaine VIC

3 1 2

Sitting elevated and proud on its corner allotment of approx 660sqm, this cream brick 1962/63-built home announces itself with quiet confidence from the street. Making its debut on the market for the very first time, this is a genuinely exciting opportunity to secure a well-loved period home, a solid foundation ready for its next cherished chapter.

From the welcoming front porch, step into a home where character runs deep. Period retro light fittings catch the eye, while the front-facing living room draws you in with large windows, warm natural light, and a solid wood fire set into a handsome period brick surround, the kind of hearth that anchors a room and anchors a life.

The updated kitchen is a functional delight, featuring stone

[For full version visit the website](#)

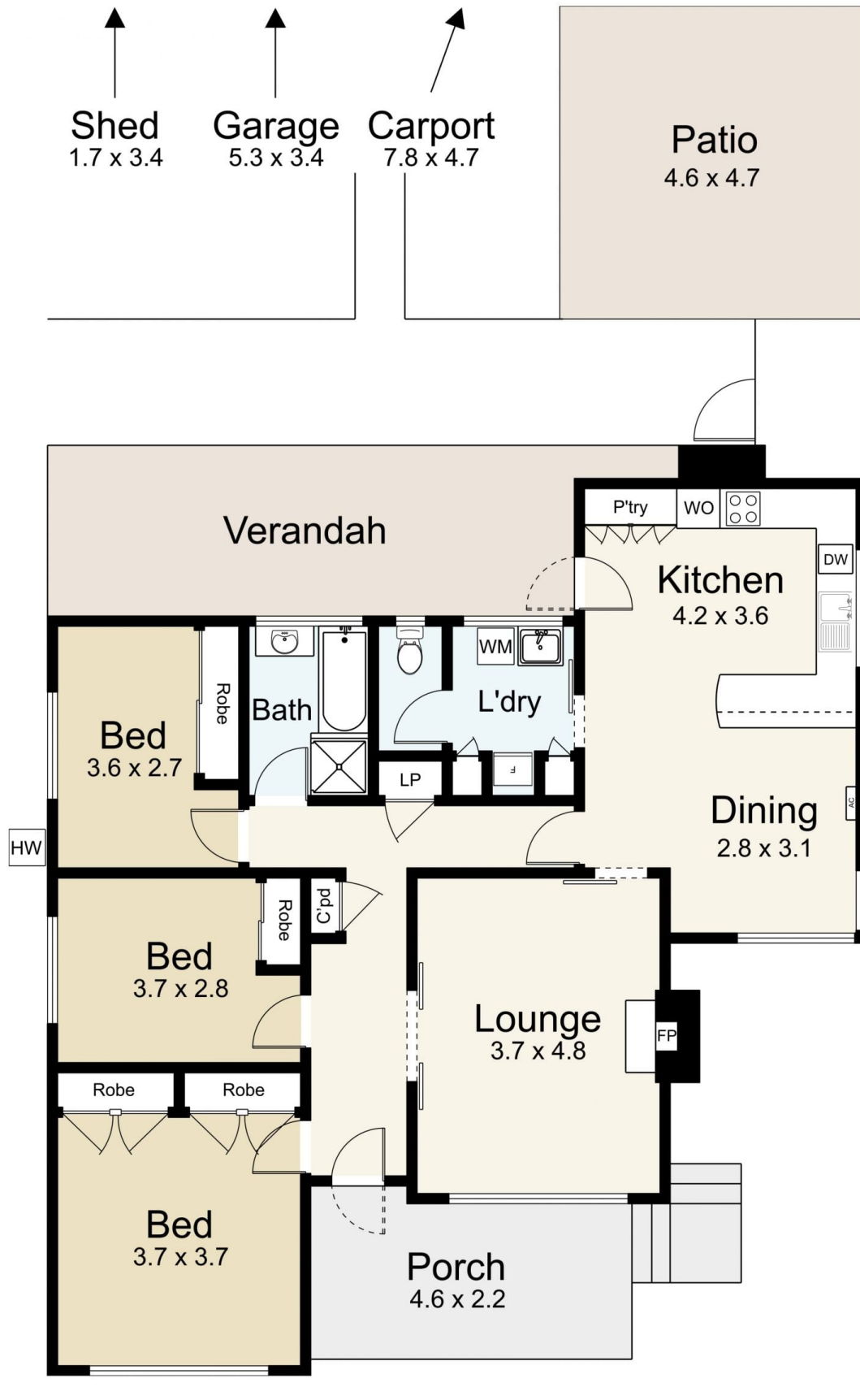
Type : House
Price : \$ 720,000
Building Size : 106 sqm
Land Size : 660 sqm
View : <https://www.cantwellproperty.com.au/sale/vic/greater-bendigo-region/castlemaine/residential/house/8648212>



Tom Robertson
03 5472 1122



Bianca Wiegard
03 5472 1122

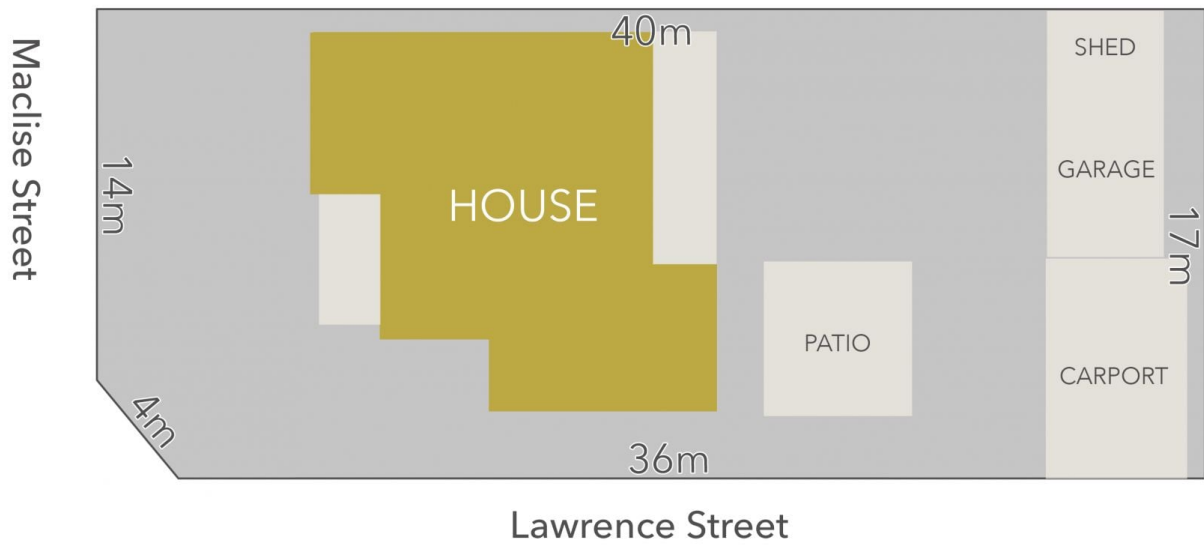


24 Maclise Street, Castlemaine



SCALE UNIT IS IN METRES
All measurements are approximate and for illustration purposes only. It should not be considered 100% accurate. Interested parties should rely on their own enquiries.

Residence - 106m²
Garage/Shed - 24m²



LAND AREA : 660m² (APPROX)

cantwell^{MM}
property

24 Maclise Street, Castlemaine

All Measurements & Details Shown Are Approximate Only.