



25 Polsue Street Maldon VIC

2 1 1

A well-presented cottage in one of regional Victoria's most loved historic towns, this property has been thoughtfully updated while keeping everything that makes a home like this worth having in the first place.

The north-facing living and dining room is bright and settled, with timber floorboards, a split system, and a garden outlook that borrows generously from the established trees and greenery beyond. The kitchen has real character, a country-style blend of updated and period cabinetry, anchored by a freestanding gas cooktop and oven. The bathroom has been freshened up with a new shower, vanity and toilet. Two bedrooms, with the main at the front of the house enjoying built-in robes and garden views.

Type : House
Price : \$595,000
Building Size : 68 sqm
Land Size : 817 sqm
View : <https://www.cantwellproperty.com.au/sale/vic/greater-bendigo-region/maldon/residential/house/8690908>

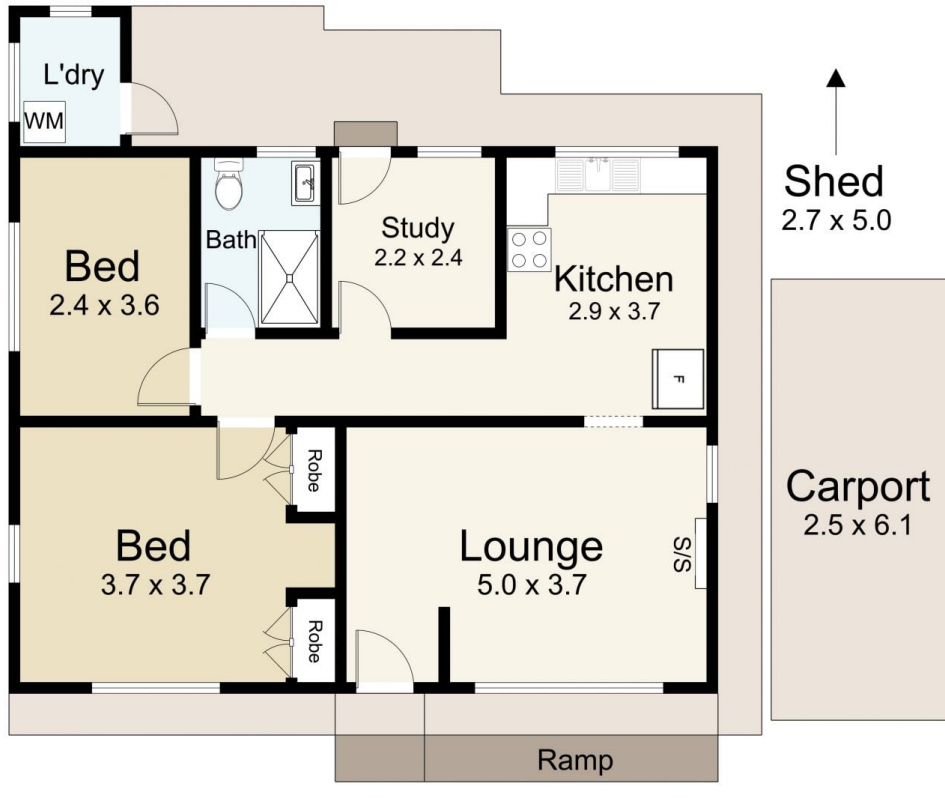
[For full version visit the website](#)



Tom Robertson
03 5472 1122



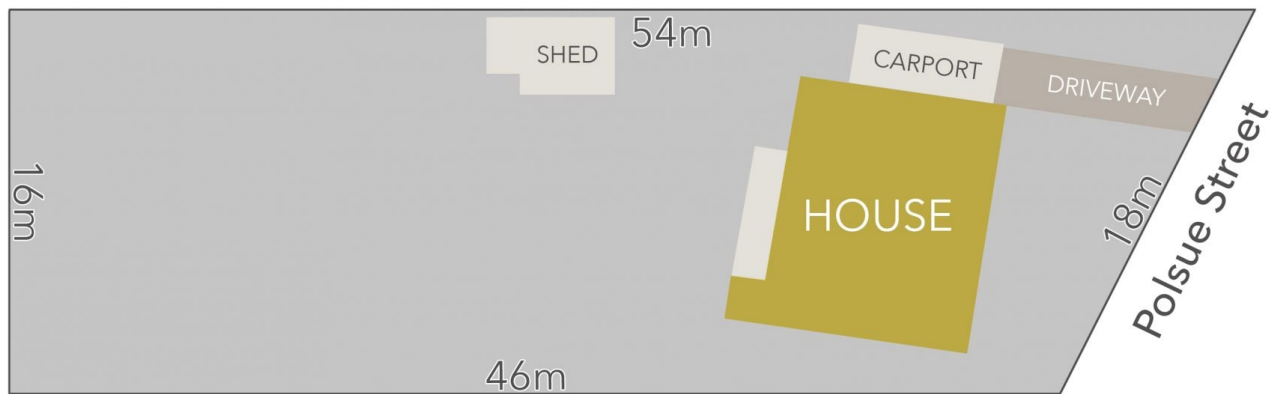
Bianca Wiegard
03 5472 1122



25 Polsue Street, Maldon

Residence - 68m²

SCALE UNIT IS IN METRES
 All measurements are approximate and for illustration purposes only. It should not be considered 100% accurate. Interested parties should rely on their own enquiries.



LAND AREA : 817m² (APPROX)



25 Polsue Street, Maldon

All Measurements & Details Shown Are Approximate Only.