



**35 Neates Road Campbells Creek VIC**

3 1 1

The land at Neates Road was granted to J. Neate in April 1862, and the Neate family remained associated with this weatherboard cottage well into the twentieth century. Miss Neate ran a poultry farm here. That kind of continuity leaves a mark, a sense of lives lived slowly and well, and you feel it the moment you arrive.

Listed on the Shire of Mount Alexander Heritage Study for its architectural and historic significance to the Campbells Creek township, the cottage retains its original gabled roof form and the quiet dignity of a 19th-century building that has been genuinely loved. The reverse bull nose verandah sets the scene: old wisteria and a rambling pink rose wind their way along the posts, a Magnolia Grandiflora keeps graceful watch overhead, and beyond it all, Mount

**Type** : House  
**Price** : \$735,000  
**Building Size** : 86 sqm  
**Land Size** : 1813 sqm  
**View** : <https://www.cantwellproperty.com.au/sale/vic/greater-bendigo-region/campbells-creek/residential/house/8696411>

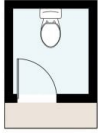


**Bianca Wiegard**  
03 5472 1122



**Jeremy Bottomley**  
03 5472 1122

[For full version visit the website](#)



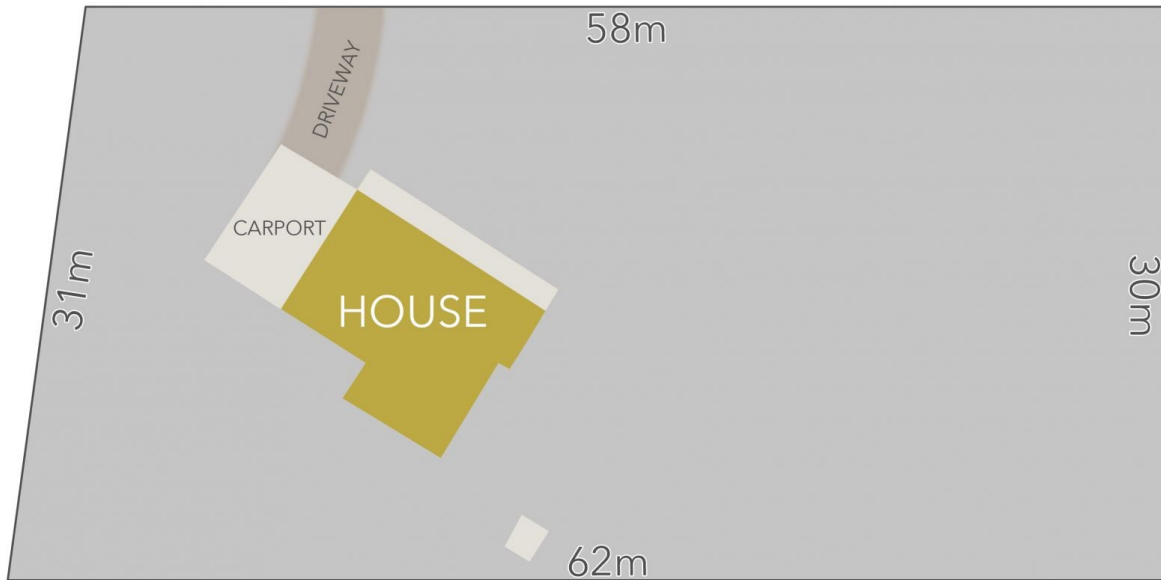
### 35 Neates Road, Campbells Creek

Residence - 86m<sup>2</sup>

SCALE UNIT IS IN METRES  
All measurements are approximate and for illustration purposes only. It should not be considered 100% accurate. Interested parties should rely on their own enquiries.



### Neates Road



LAND AREA : 1813m<sup>2</sup> (APPROX)



### 35 Neates Road, Campbells Creek

All Measurements & Details Shown Are Approximate Only.