



**86 Fletcher Street Castlemaine VIC**

4 1 1

From the front verandah, with lacework overhead and Castlemaine spreading out through the treetops below, it is immediately clear that this house has been well lived in. Set high on a 1009 sqm corner allotment (approx), this is a double-fronted Victorian that has accumulated character across generations and has been updated where it counts.

The central hallway sets the tone: a painted arch in green and red, period pine boards underfoot, and the particular quality of light that only comes from high ceilings and doors at each end. Off the hall, the rooms of the original house are intact and full of detail, decorative pressed ceilings, period fireplaces, and the kind of proportions that contemporary homes rarely reach. One bedroom serves equally well as a study or sitting room; another opens

**Type** : House  
**Price** : \$ 1,200,000  
**Building Size** : 136 sqm  
**Land Size** : 1009 sqm  
**View** : <https://www.cantwellproperty.com.au/sale/vic/greater-bendigo-region/castlemaine/residential/house/8696741>

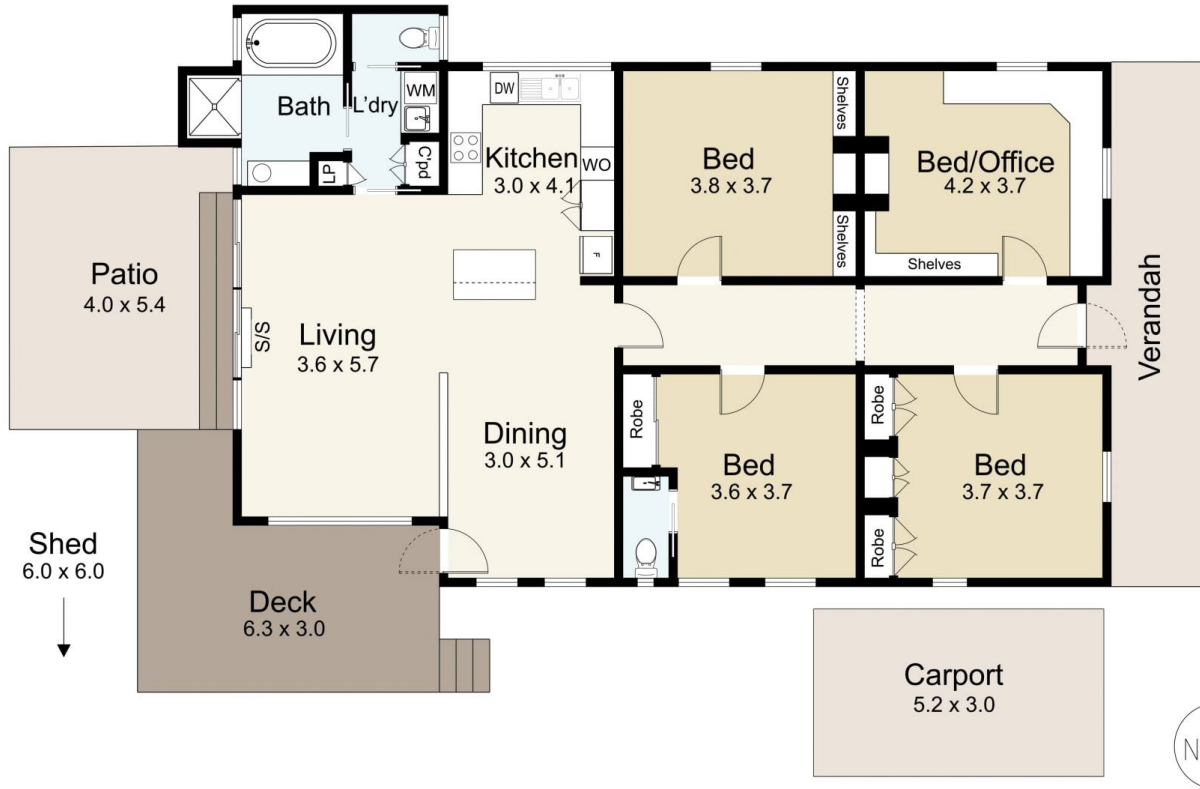
[For full version visit the website](#)



**Jeremy Bottomley**  
03 5472 4122



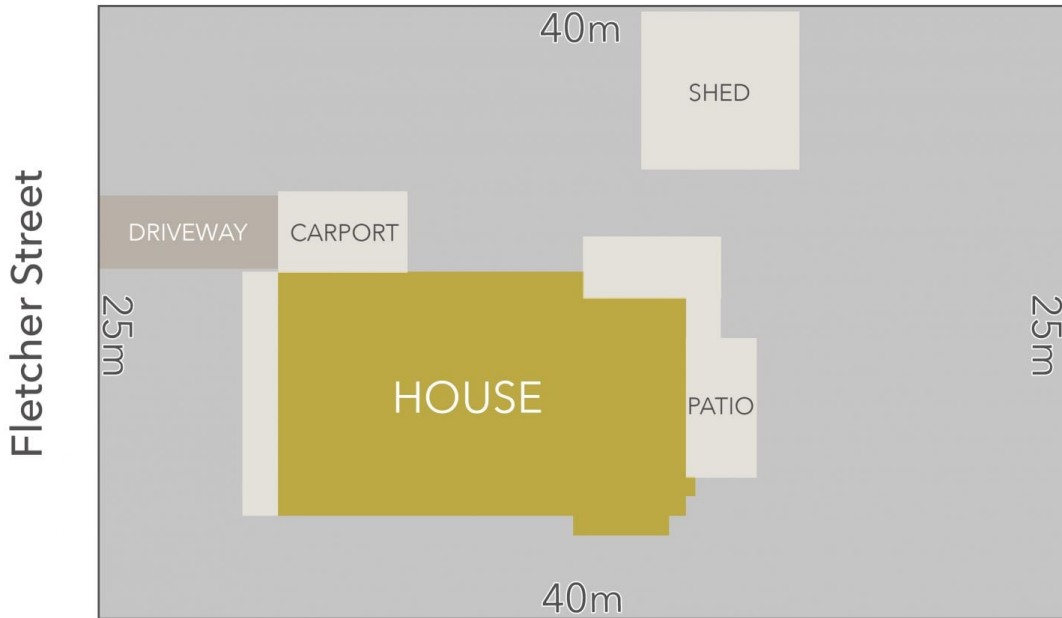
**Tom Robertson**  
03 5472 4122



## 86 Fletcher Street, Castlemaine

SCALE UNIT IS IN METRES  
 All measurements are approximate and for illustration purposes only. It should not be considered 100% accurate. Interested parties should rely on their own enquiries.

Residence - 136m<sup>2</sup>  
 Patio/Deck- 40m<sup>2</sup>



LAND AREA : 1008m<sup>2</sup> (APPROX)



## 86 Fletcher Street, Castlemaine

All Measurements & Details Shown Are Approximate Only.