



9 Pardalote Place Castlemaine VIC

4 2 4

From the street, this home announces itself clearly. White weatherboard, white fence, a gabled roofline with a distinctive triangular clerestory window set into the peak, the design language is coastal, considered and immediately at odds with what you might expect to find in central Victoria. It is a house that has borrowed confidently from the coast and made it entirely its own.

A sweeping driveway leads to the carport and garage. The lawns are open and generous, 1668 sqm (approx) of green, framed by native trees and wide country sky, with room to shape the garden on your own terms.

Inside, the coastal palette deepens. An arched ceiling rises to 4.2 metres across the open-plan kitchen, dining and

Type : House
Price : \$1,790,000
Building Size : 260 sqm
Land Size : 1668 sqm
View : <https://www.cantwellproperty.com.au/sale/vic/greater-bendigo-region/castlemaine/residential/house/8699579>

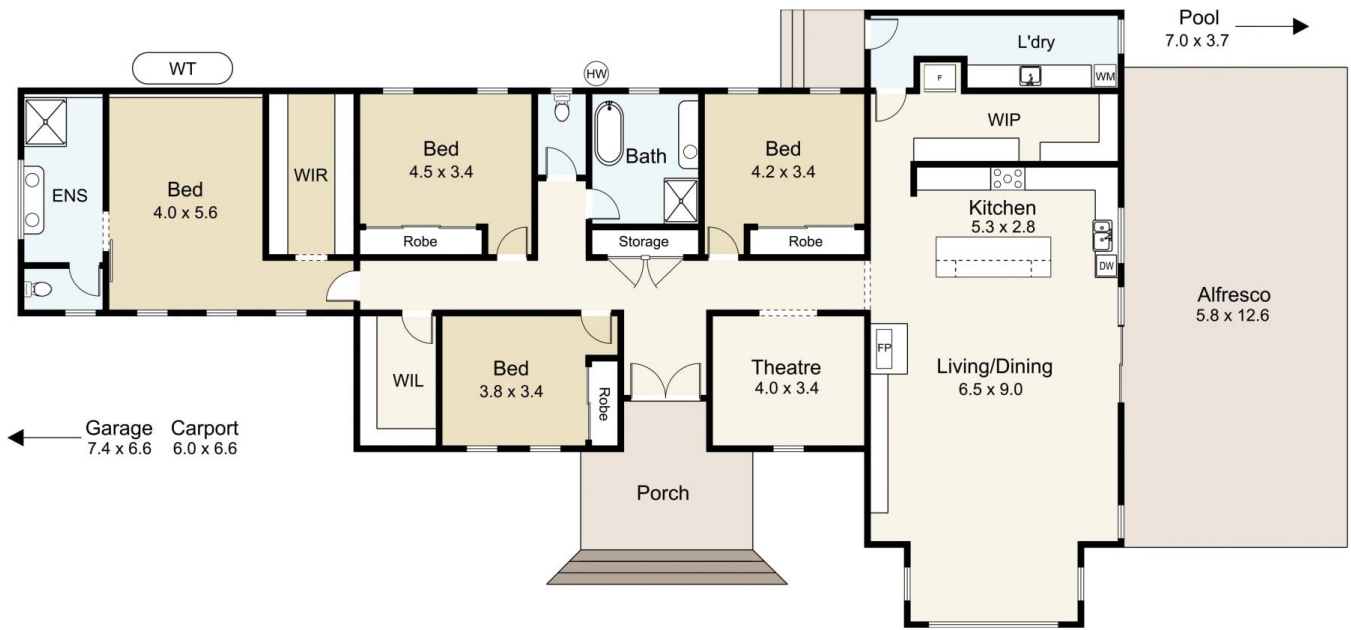
[For full version visit the website](#)



Jeremy Bottomley
03 5472 1122



Tom Robertson
03 5472 1122



9 Pardalote Place, Castlemaine

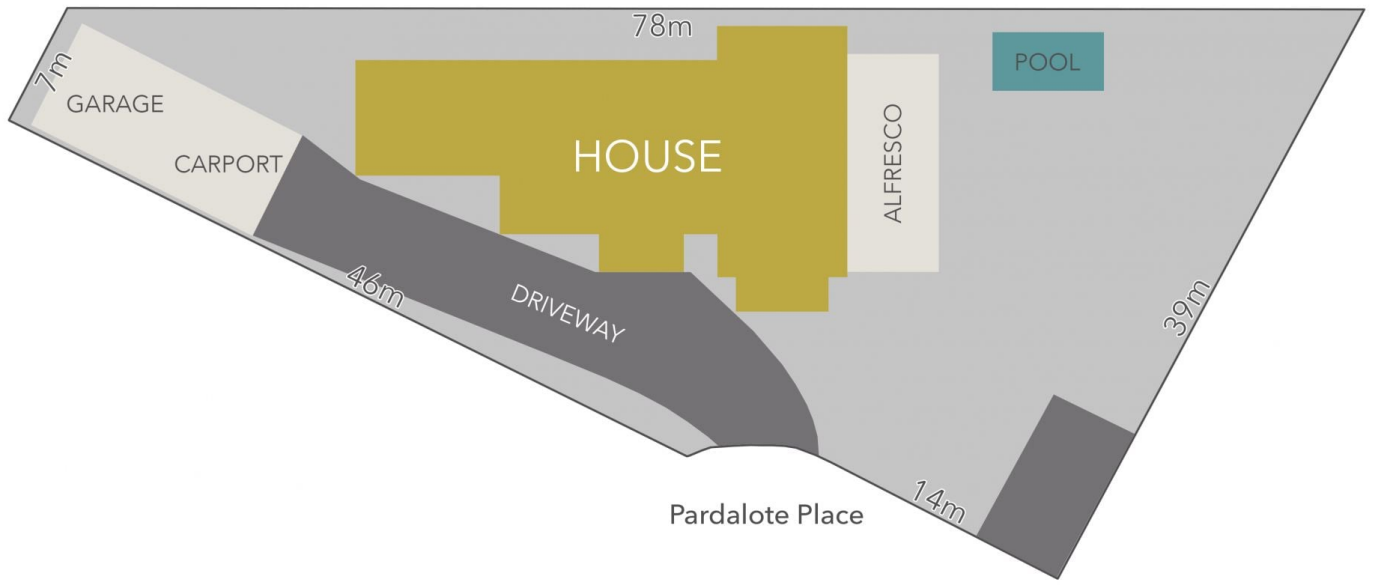
SCALE UNIT IS IN METRES
All measurements are approximate and for illustration purposes only. It should not be considered 100% accurate. Interested parties should rely on their own enquiries.

Residence - 260m²
Alfresco - 73m²

4

2

4



LAND AREA : 1668m² (APPROX)

9 Pardalote Place, Castlemaine

All Measurements & Details Shown Are Approximate Only.