

**90 Castlemaine Street Fryerstown VIC**

3 1 2

Some buildings hold their history lightly. This one wears it with authority. The former Fryerstown Courthouse, built in solid brick in the 1880s, has been thoughtfully converted into a three-bedroom home that keeps faith with its origins: bluestone foundations, slate roof, high ceilings, arch doorways, and the original courtroom at its heart.

The front porch opens to that former courtroom, now a living room of exceptional scale and character. The walls are triple brick; solid, quiet, and cool in summer. The ceiling is the room's defining feature: an exposed timber king post truss structure pitching to a ridge, lined in warm-toned boards and punctuated by a round clerestory window at the apex and paired arched windows in the gable. It is the kind of ceiling that stops people at the threshold. Timber

**Type** : House  
**Price** : \$895,000  
**Building Size** : 152 sqm  
**Land Size** : 991 sqm  
**View** : <https://www.cantwellproperty.com.au/sale/vic/greater-bendigo-region/fryerstown/residential/house/8704764>

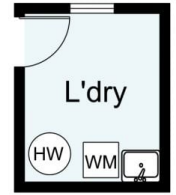
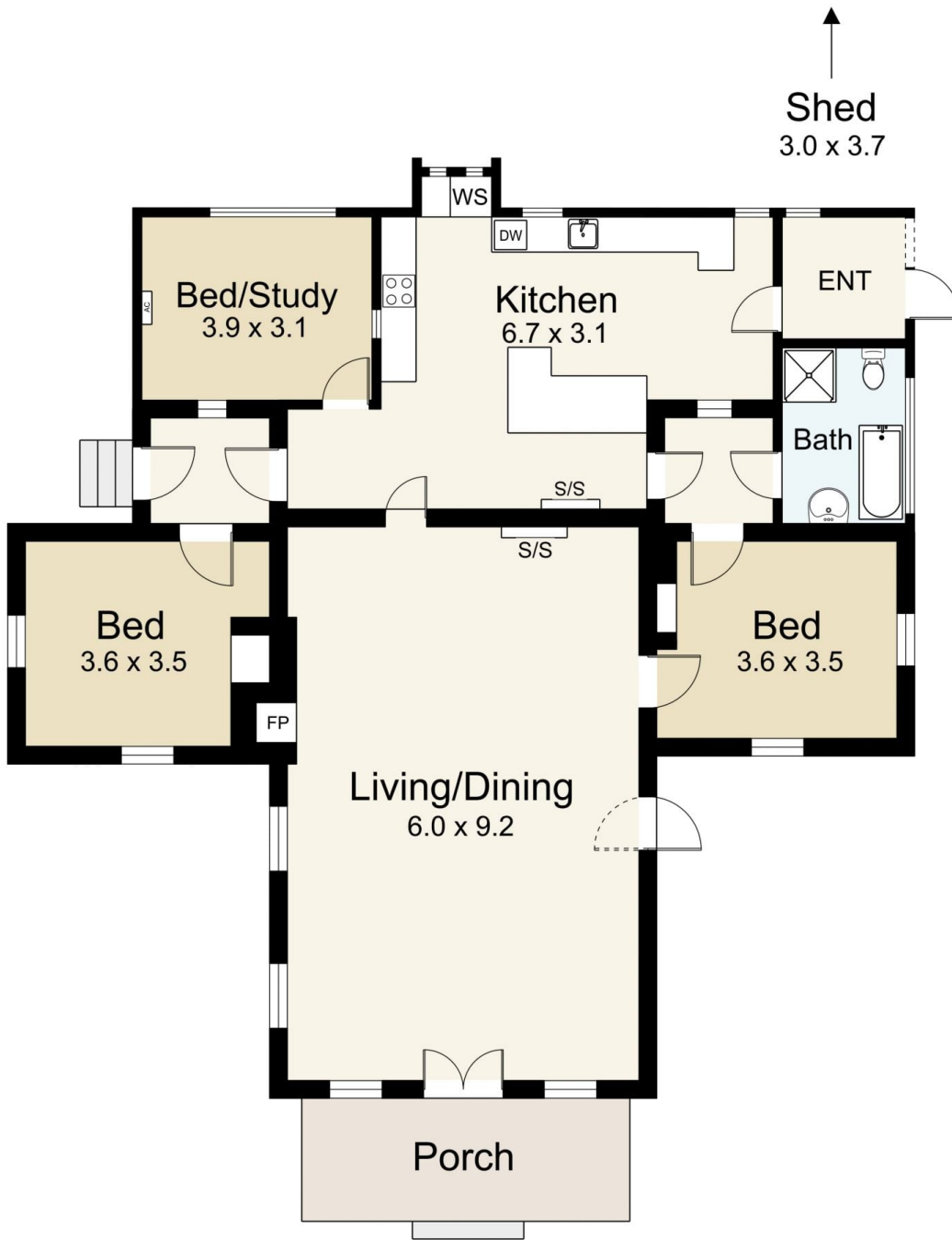
[For full version visit the website](#)



**Nick Haslam**  
03 5472 1122



**Bianca Wiegard**  
03 5472 1122



90 Castlemaine Street, Fryerstown

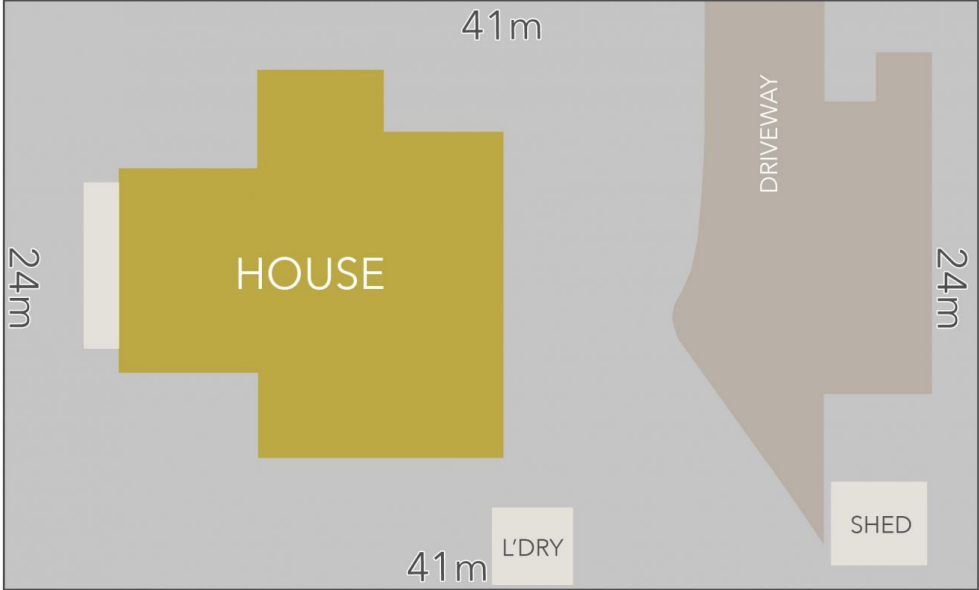


SCALE UNIT IS IN METRES  
All measurements are approximate and for illustration purposes only. It should not be considered 100% accurate. Interested parties should rely on their own enquiries.

Residence - 152m<sup>2</sup>

Market Street

Castlemaine Street



LAND AREA : 991m<sup>2</sup> (APPROX)



90 Castlemaine Street, Fryerstown

All Measurements & Details Shown Are Approximate Only.