



**6A Saint Street Castlemaine VIC**

3 2 1

Tucked behind an established hedge on one of Castlemaine's most convenient addresses, this three-bedroom period home offers genuine character and a practical layout within easy walking distance of the town centre.

The north-facing living room anchors the front of the home, with double-hung leadlight windows, ornate plaster ceiling details, timber floors, a split system, and double doors opening directly to the front deck. Character and liveability in equal measure.

Three bedrooms, each with built-in robes. The main includes an ensuite with a shower, vanity and toilet. One bedroom also opens to the front deck. A second bathroom

**Type** : House  
**Price** : \$775,000  
**Building Size** : 84 sqm  
**Land Size** : 308 sqm  
**View** : <https://www.cantwellproperty.com.au/sale/vic/greater-bendigo-region/castlemaine/residential/house/8705140>

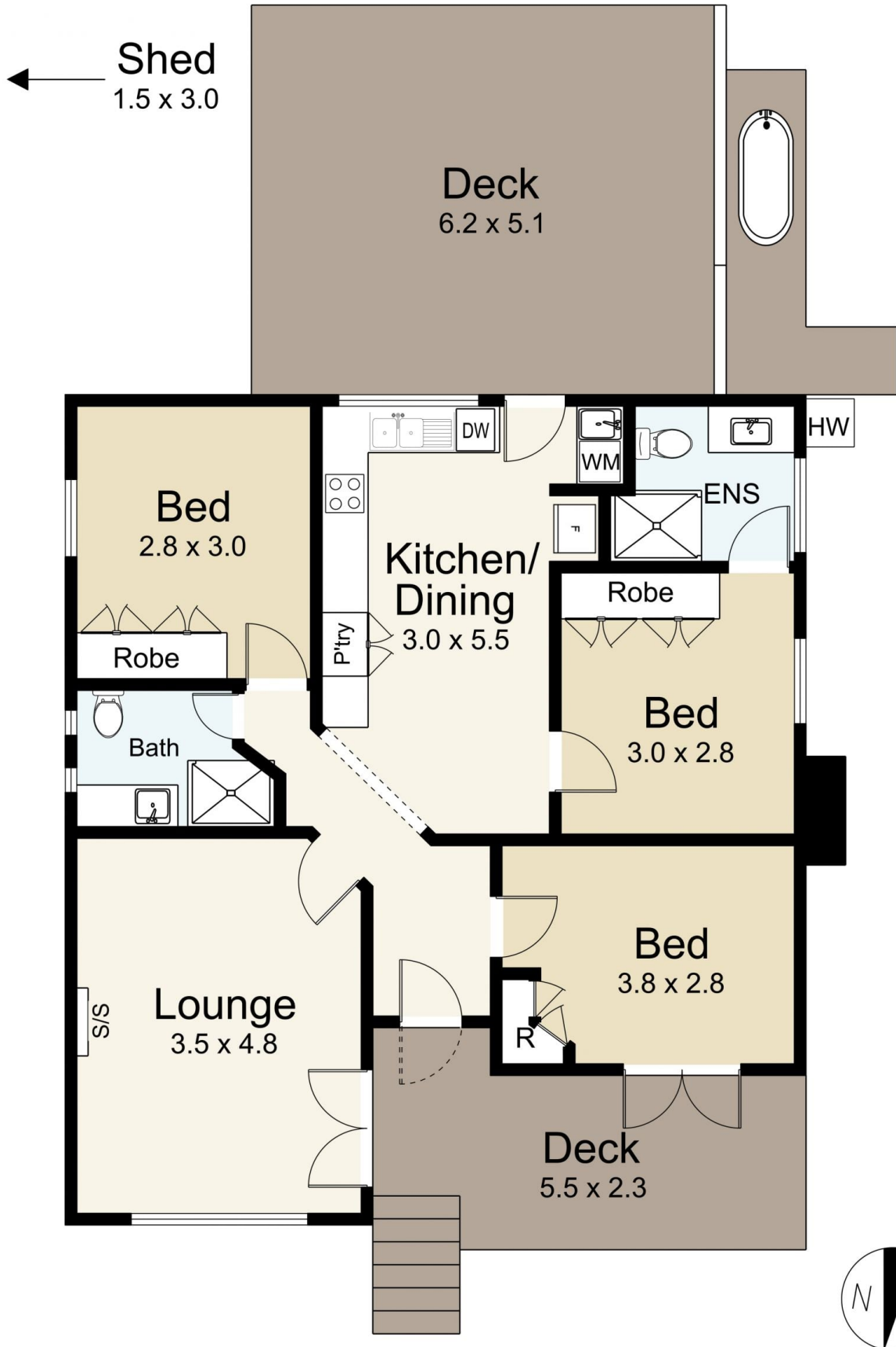


**Bianca Wiegard**  
03 5472 1122



**Jeremy Bottomley**  
03 5472 1122

[For full version visit the website](#)



**cantwell**<sup>MM</sup>  
property

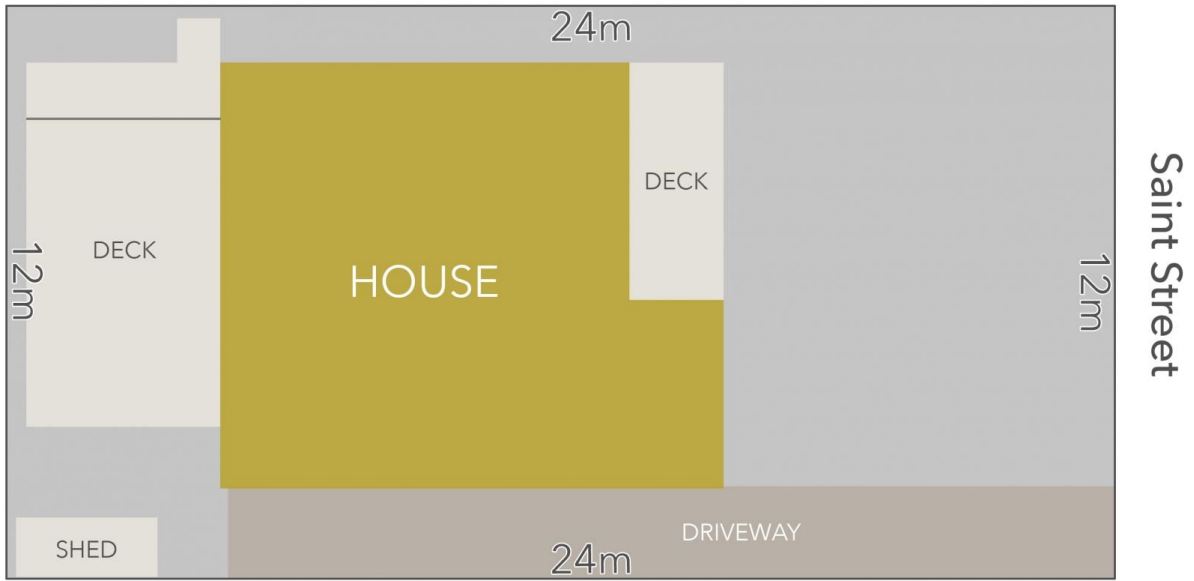
6A Saint Street, Castlemaine

SCALE UNIT IS IN METRES

All measurements are approximate and for illustration purposes only. It should not be considered 100% accurate. Interested parties should rely on their own enquiries.



Residence - 84m<sup>2</sup>



LAND AREA : 308m<sup>2</sup> (APPROX)

**cantwell**<sup>MM</sup>  
property

6A Saint Street, Castlemaine

All Measurements & Details Shown Are Approximate Only.